



## Taste of the South Island

This 8-day scenic tour is one of our most popular routes. It will let you taste the beauty and diversity of the South Island. Visit its two largest cities, Christchurch and Dunedin, Lake Tekapo, and stunning Mt. Cook National Park. Then experience Queenstown's excitement and the mighty Milford Sound before heading north to the unique West Coast Glacier region. Finally, cross the Southern Alps on board the world-famous TranzAlpine Scenic Train back to Christchurch. A fitting end to your 'taste of the south'.

Starts in: Christchurch  
Finishes in: Christchurch  
Length: 8days / 7nights  
Accommodation: Motels  
Can be customised: Yes

This itinerary can be customised to suit you perfectly. We can add more days, remove days, change accommodations, mix it up, add activities to suit your interests or simply design and create something from scratch. Call us today to get your custom New Zealand itinerary underway.



### Inclusions:

Includes: Late model rental cars  
Includes: Fully inclusive rental car insurance (excess may apply)  
Includes: Unlimited kms  
Includes: Afterhours emergency support while touring  
Included activity: Private Transfer Christchurch International Airport to Christchurch Accommodation  
Included activity: Electronic Travel Guide and In-Country Support App  
Included activity: The Visitor Promise - Cultural Learning Course  
Included activity: Milford Sound Coach, Cruise and Scenic Flight  
Included activity: TranzAlpine Scenic Train: Greymouth to Christchurch  
Included activity: Shared Transfer from Christchurch Train Station to Christchurch CBD  
Accommodation with Christchurch Touring Company  
Included activity: Private Transfer from Christchurch Accommodation to Christchurch International Airport with Christchurch Touring Company  
1 lunch

## Day 1



### Private Transfer Christchurch International Airport to Christchurch Accommodation

On arrival, you will be met by a private driver and transferred to your Christchurch accommodation.

### Welcome to Christchurch City

Christchurch New Zealand's garden city is steadily being transformed into a vibrant urban destination. Encompassing a large green belt, it is known for its wide tree lined avenues and lush gardens. A great way to explore the city or easy way to see the sights or ride the historic trams across town to the renowned botanic gardens and the unique cardboard Transitional Cathedral, that's right it is built of cardboard!

### Christchurch Botanic Gardens - suggested activity

Located just 15 minutes from the city center, Christchurch's 75-acre Botanic Gardens boast the finest collection of exotic and indigenous plants in New Zealand. This impressive collection creates a tranquil oasis, with spring daffodils, stunning summer roses and herbaceous borders, vibrant autumn foliage, and cozy conservatories to warm up in during winter. There's something to enjoy in every season. The New Zealand Garden also offers a unique glimpse into the country's wilderness, providing a peaceful escape throughout the year.

### SUGGESTED ACTIVITY - Art in Christchurch

Christchurch is a city brimming with art, from exhibitions and galleries to vibrant street art throughout the city. While you're here, take time to explore the city's rich artistic offerings, starting with the Christchurch Art Gallery Te Puna o Waiwhetū. With a diverse range of works on display, from old masters to contemporary art, there's something for everyone. The gallery also hosts regular events, including talks, museum tours, and film screenings. Don't miss The Arts Centre Te Matatiki Toi Ora, a vibrant hub for arts, culture, education, creativity, and entrepreneurship. This collection of heritage buildings houses museums, boutique galleries, eateries, retailers, and offices. Beyond the conventional galleries, the city's streets are an open-air art gallery. Christchurch has gained a strong reputation as the home of street art, with colorful murals from inspiring artists appearing across the inner city. Be sure to look out for the ever-evolving street art, including the Riverside Mural, Rauora Park's spray cans, and the urban aesthetics of the YMCA building.

### SUGGESTED ACTIVITY - Christchurch Gondola

In the Heathcote Valley, just a 20-minute drive from the heart of Christchurch City, ride the Christchurch Gondola for nearly a kilometer to the collapsed rim of an extinct volcano, which exploded six million years ago. Take in the spectacular panoramic views of the central city, Lyttelton Harbour, Banks Peninsula, Canterbury Plains, and the distant peaks of the Southern Alps. Wander the summit complex, enjoy a coffee or lunch in the cafe, and choose one of many nature walks to explore or visit the Christchurch Discovery Ridge, a dramatic reconstruction of the history of the Port Hills and Christchurch.

### Your accommodation: Quest on Cambridge

Quest on Cambridge serviced apartment-style hotel rooms offer guests a relaxed and comfortable Christchurch accommodation experience. Each room has an open-plan living area, a fully equipped kitchen, and natural light. Quest on Cambridge is a short walk from the south shopping centre and to the Botanic Gardens.



## Day 2



### Collect Rental Car

This tour's from price includes an intermediate-sized vehicle, setting you up for comfortable travels. Yet, we understand every adventure is unique! Feel free to select the perfect wheels from our incredible collection of rental cars, spanning from economy hatchbacks to premium SUVs.

## Christchurch to Aoraki-Mt Cook National Park

Drive through the heart of the South Island, crossing the vast Canterbury plains. Catch your breath in Geraldine before continuing through Fairlie. Ascending Burkes pass you'll come to the picturesque town of Lake Tekapo. Follow the road and take in the view of Aoraki-Mt Cook (New Zealand's tallest mountain) from the shores of Lake Pukaki, known for its glacier fed turquoise blue colour. Continue along the lake to your final destination Aoraki-Mt Cook Village.

---

### SUGGESTED ACTIVITY - Glacier Explorers

Experience 500-year-old icebergs up close on the Aoraki-Mt Cook terminal lake. The Glacier Explorers tour is the only one of its kind in New Zealand and one of only three in the world! Very few glaciers terminate into lakes and even fewer of them are accessible. See towering ice cliffs and floating icebergs from the safety of a specially designed boat. These boats provide a safe way to view unseen and inaccessible areas of New Zealand's largest glacier The Tasman.

---

### SUGGESTED ACTIVITY - Sir Edmund Hillary Alpine Centre Museum and Theatre Explorer Pass with Hermitage

A tribute to New Zealand's Sir Edmund Hillary, a humanitarian, ambassador, and one of the world's greatest explorers. The centre showcases the Aoraki Mount Cook region, the history of climbing, and early transport used throughout the region. This comprehensive museum details the life of Sir Edmund Hillary, the Hermitage, and provides access to the 126-seat custom-designed theatre. Check out the daily film schedule which includes 3D Movies, documentaries, and 360-degree digital dome features.

---

## Aoraki-Mt Cook National Park

At 3754m Aoraki-Mt Cook is Aotearoa-New Zealand's highest mountain, located deep in the heart of the Southern Alps. As well as its impressive beauty, Aoraki-Mt Cook National Park is also home to a huge range of awe-inspiring sights and activities. Take to the air with Mt Cook Ski Planes for a scenic flight that includes a glacier landing. At around 27 kilometres long the Tasman Glacier is New Zealand's longest and a Glacier Explorers tour allows you to see its unique features up close.

There are many short hikes in and around the park and these are well signposted around the village. Those with an interest in the night sky should take a Big Sky Stargazing tour with the Hermitage Hotel. The region is considered to have one of the clearest night skies in the world and is one of the few gold-rated dark sky reserves worldwide.

Visit the Sir Edmund Hillary Alpine Centre for insight into this region's mountain climbing history. You'll also learn of Sir Ed's incredible achievements and his dedication to helping others around the world.

---

### Walking Track in Aoraki-Mt Cook National Park

Aoraki-Mt Cook Village offers a variety of short scenic walks suitable for all ages and fitness levels. Start your adventure at the Department of Conservation Information Centre, where you can learn about track conditions, local history, and the area's wildlife. Here are a few popular walks to explore: Bowen Bush Walk: 10-minute return Glencoe Walk: 10-minute return Red Tarns Track: 2-hour return Kea Point Walk: 2-hour return Sealy Tarns Track: 3 - 4 hours return Please be aware that at Aoraki/Mount Cook, you will need to pay for parking at the White Horse Hill car park. The cost is \$5 per hour or \$25 for the full day. A 20-minute free period is available for quick drop-offs.

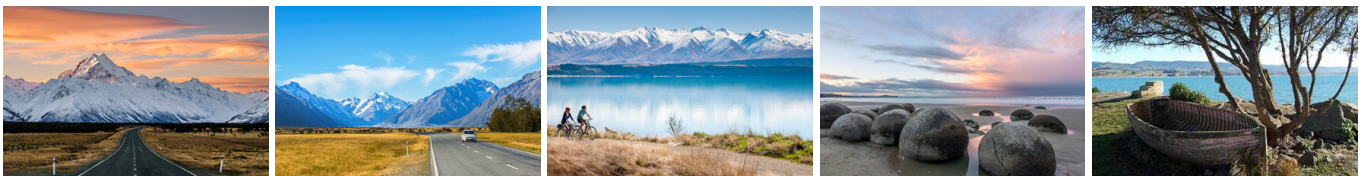
---

### Your accommodation: Aoraki Court Motel

This motel accommodation is located right in Mt Cook Village. Well equipped units all within walking distance of the village facilities and nearby restaurants.



## Day 3



### Aoraki Mt Cook National Park to Dunedin

Leave Aoraki Mt Cook National Park and travel past Twizel, one of the locations for the Lord of the Rings films. Go through Omarama, the gliding capital of New Zealand. Continue down the Waitaki Valley follow the hydro power generating system to the rural town of Kurow, home to the divine Valli Wines. Stop for a sip or continue on to the east coast. Stretch your legs in Oamaru, known for its white stone buildings constructed with the local Oamaru Stone and Steampunk influence. If you were a little late off the mark this morning you may get the chance to see the blue penguins come ashore at dusk. Continue south down the coast to Moeraki, and take a detour towards the beach to see the Moeraki Boulders, a unique geological feature well worth a look. As you arrive in Dunedin, take in the city's Edwardian and Scottish heritage reflected in the buildings around the city centre The Octagon.

---



## Dunedin

Dunedin, known in Māori as Ōtepoti, is referred to as the "Edinburgh of the Southern Hemisphere". The city has a rightly deserved reputation as one of the best-preserved Victorian and Edwardian cities in the Southern Hemisphere. Of particular note is Dunedin Railway Station, built 1904 - 1906, and St Paul's Cathedral in the Octagon. The Otago Museum is renowned for its Māori and Pacific Island collections and natural history displays. A visit to the Speights, New Zealand's oldest brewery, is also considered a must while in Dunedin. The Botanic Gardens is a great spot and at the right time of year, you can witness the Rhododendron Dell in bloom. The Otago Peninsula is the only home in the world to the Northern Royal Albatross. The Peninsula can be visited for the day from Dunedin and the stunning harbor landscape and wildlife are worth exploring. High among the rolling hills of the Peninsula is Larnach Castle, the grand home of an early politician. Construction of the castle began in 1871 and was completed 12 years later. From here, views out to sea and back towards the city emphasize the singular beauty of Dunedin and its jewel-like harbor.

---

### SUGGESTED ACTIVITY - Alpine Vista Heli Flight and Alpine Landing with The Helicopter Line

This short scenic option is the ideal opportunity to touch snow and experience the thrill of a helicopter flight. Sweep through the rugged high-country landscape of the Ben Ohau Mountain Range to a landing site on a snow field high in the mountains. Enjoy the fantastic vista from this alpine setting as you look out to the mountains and glaciers and down into the valleys that were carved out by glaciers centuries ago. Should weather not be suitable to take this flight you are able to transfer your booking onto a similar tour on any of the Helicopter Line's operations in Queenstown or Mt Cook. It is important to read and understand the risks associated with this activity. A full risk disclosure can be found [here](#).

---

### SUGGESTED ACTIVITY - Dunedin Botanic Gardens - Suggestion

The Dunedin Botanic Garden is New Zealand's first botanic garden and is also a Garden of International Significance. It is home to more than 6,800 plant species and is spread across both rolling hills and flatlands. Wild native bellbirds, wood pigeons and tui can be heard on most days. The garden occupies 30.4 hectares in North Dunedin. Its varying range of floriculture and horticultural includes roses, herbaceous and perennial borders, a rock garden, New Zealand native plants and four hectares of Rhododendron Dell. It also houses a New Zealand Native plant collection including cultivation of rare and endangered native plant species.

---

### SUGGESTED ACTIVITY - Dunedin's museums - suggested activity

#### Otago Museum

Discover rare objects, special exhibitions and a live butterfly rainforest experience at the Otago Museum. Through the galleries, you'll discover the unique culture, heritage and wildlife of the Otago region. Highlights include the Tangata Whenua gallery which tells the story of the Southern Maori life and mythology. The Discovery World Tropical Forest is fun for young and old, you'll enter a rainforest filled with hundreds of beautiful butterflies. The special exhibitions are always fascinating and when you're ready for a break there's a great cafe to relax at. The museum is open 10am to 5pm daily, except Christmas Day.

#### Toitū Otago Settlers Museum

Encounter history at the Toitū Otago Settlers Museum. Learn about the people whose character, culture, technology, art, fashion, and transport shaped New Zealand's First Great City, Dunedin. In the galleries you can trace the fascinating journeys from the earliest settlers, Kai Tahu and their ancestors, to the most recent arrivals. The themed galleries weave the stories of past and present with future thinking, featuring interactive displays with stunning visuals and powerful narratives. Admission is free and the museum is open daily (except Christmas Day) from 10am to 4pm April to September, 10am to 5pm October to March and Thursdays until 8pm.

---

### Your accommodation: Bella Vista Dunedin

Bella Vista Dunedin is centrally located and offers clean, modern, self-catering accommodation. The perfect base for exploring Dunedin, enjoy the convenience of being located in close proximity to the Dunedin CBD, shops, entertainment and other activities.



---

## Day 4



### Explore Otago Peninsula

The Otago Peninsula extends from the southern side of Otago Harbour, just minutes from the city center. A short drive takes you past scenic bays and picturesque farmland. Renowned as one of New Zealand's premier eco-tourism destinations, the peninsula is home to the iconic Royal Albatross, with Taiaroa Head at its tip hosting the world's only mainland breeding colony of these majestic birds. In addition to the albatross, the area is rich in wildlife, including New Zealand fur seals, sea lions, and rare yellow-eyed penguins. You can explore a variety of walking tracks, enjoy breathtaking views, and stunning beaches, and visit the magnificent Larnach Castle, a cultural highlight of the region.

Larnach Castle, New Zealand's only castle, was built in 1871 by politician and merchant William Larnach, a visionary who played a key role in shaping the country's early history. Constructed for his beloved first wife, Eliza, the castle's shell took 200 workmen three years to complete, followed by twelve years of intricate interior craftsmanship. Perched high on the Otago Peninsula, the castle offers stunning views over Dunedin City. Its gardens hold International Garden of Significance status and feature a unique collection of antiques, including a rare nine-piece Totara knot suite. The Ballroom Café provides the perfect spot to relax and enjoy refreshments while reflecting on your visit. The ballroom itself has a fascinating history, having once served as an asylum, an antique sales room, and even a sheep pen before its beautiful restoration. With a self-guided tour, you can explore the castle and gardens at your own pace.

This tour focuses on the Royal Albatrosses and wildlife that inhabit Pukekura (Taiaroa Head). Begin with a short film, then enjoy the informative commentary provided by your guide about albatrosses as you visit the observatory to see nesting albatrosses in their natural habitat.

This drive takes you through the heart of the historical Otago Goldfields. The townships of Lawrence, Roxburgh and Alexandra, once booming mining towns in the late 1800's gold rush now sleepy sun-traps bearing little resemblance to their bustling past. However, some buildings do remain as do the original shafts and workings. In more recent times Alexandra has become the 'stone fruit capital' of New Zealand, with the ideal climate for the trees. It is also a great place to buy some of the local produce. The road follows the South Island's longest river, the Clutha River, and at Clyde, you will see one of the largest hydro power stations harnessing its energy before passing through Gibbston to arrive at your destination today, Queenstown.  

Queenstown known in Māori as Tāhuna, is home to many adrenaline-inducing activities. Nestled on the shores of Lake Wakatipu, this alpine town has very distinct seasons, and most adrenaline-filled activities can be accessed year-round. Queenstown is home to jet boating, bungy jumping, rafting, skydiving, paragliding, and even indoor thrills. If you want that rush - head out on the Shotover Jet, dive off the Nevis Bungy, freefall on the Canyon Swing, or Zip line the Gondola. While arguably the brightest gem in New Zealand's crown, Queenstown offers far more than an action-packed getaway. If you're looking for a slightly slower pace, there are plenty of recreational activities, including hiking and biking trails to explore, guided tours, boat cruises, scenic flights, or spa and wellness options to help you get away. Head to the lakefront, eat at one of the al fresco eateries, and soak up the local vibes; catch a ride on the iconic 100-year-old steamship the TSS Earnslaw; or take the Skyline Gondola and enjoy bird's-eye views of the Remarkables mountain ranges and Lake Wakatipu. Pack a picnic and go for a hike, only 20 minutes from Central Queenstown, Coronet Peak opens for summer sightseeing. You can ride the Peak Gondola to the top for panoramic views and hike the trails, or go for a bike ride on many excellent biking trails. In winter, Queenstown becomes a world-class winter resort, with four ski areas and a range of activities, bars, restaurants, and ways to relax and unwind.&nbsp;

Shotover Jet is the only company permitted to operate in the Shotover River Canyons. It's a thrilling ride! Skim past rocky outcrops at close range in your Shotover Jet 'Big Red', as you twist and turn through the narrow canyons at breathtaking speeds. And a major highlight - hold tight for the world-famous Shotover Jet full 360-degree spins! It is important you read and understand the risks associated with this activity. For more information please see [here](#).

Enjoy a quintessential Kiwi experience, a delicious gourmet BBQ buffet meal, and a farm demonstration in a stunning lakeside setting. Take in the stunning views of Lake Wakatipu and its surroundings as you cruise across the lake to the historic Walter Peak high country farm aboard the TSS Earnslaw Steamship. Enjoy the ambiance of the heart of the stately homestead while your Colonel's Homestead Restaurant chef prepares a gourmet BBQ dinner. Your seasonal menu includes an extensive selection of local New Zealand produce, including succulent meats and a selection of delicious vegetables and salads. Complete your meal with your choice of delicious desserts, or New Zealand cheeses. After dinner, watch the farm dogs in action with a sheep-herding demonstration and say hello to the other farm animals. Finally, cruise home under the southern stars and enjoy the fresh night air as the lights of Queenstown draw ever closer.

Blue Peaks Lodge offers well equipped self contained rooms with a fantastic location overlooking Queenstown and is just an easy five minutes walk to the Queenstown lakefront.



## Day 5



### Milford Sound Coach, Cruise and Scenic Flight

Travel along the shores of Lake Wakatipu and through the rolling countryside to Te Anau. After a short break, the coach continues along the spectacular alpine route of the Milford Road through impressive, awe-inspiring scenery. There is time for photo stops and short walks along the way. Considered one of the most beautiful drives in the world your coach driver provides detailed commentaries throughout the trip. On reaching Milford Sound, join a spectacular one hour 40 minute cruise to the mouth of the fiord with excellent viewing opportunities. Keep a look out for seals basking on the rocks, dolphins and penguins. There are scenic highlights such as Mitre Peak and Pembroke Glacier. Informative commentary from the captain explains the history and highlights points of interest during the cruise. Following the cruise, you will be transferred to Milford Airport for the return flight to Queenstown (weather permitting). During the scenic flight, take in expansive views of the snow-capped Southern Alps, golden tussocked high country and the upper reaches of Lake Wakatipu. A taxi transfer is provided to your accommodation on arrival at Queenstown airport. It is important you read and understand the risks associated with this activity. For more information, see [here](#).

---

### SUGGESTED ACTIVITY - Queenstown Skyline Gondola Ride

Hop aboard the Skyline Gondola - the steepest cable car lift in the Southern Hemisphere! From which you can take in the awe-inspiring views of this spectacular landscape. Sit back and relax as you enjoy panoramic views of The Remarkables, Walter Peak, Cecil Peak, Coronet Peak and the magnificent Lake Wakatipu.

---

### SUGGESTED ACTIVITY - Gondola and Buffet Dinner with Skyline Queenstown

With breathtaking views across Queenstown and Lake Wakatipu, the Skyline Complex is a must-do. Catch the fully enclosed gondola to the summit for a remarkable panorama of the city's surroundings. Wander the outdoor viewing decks then enjoy a gourmet buffet meal in the Stratosphere Restaurant.

---

### Your accommodation: Blue Peaks Lodge

Blue Peaks Lodge offers well equipped self contained rooms with a fantastic location overlooking Queenstown and is just an easy five minutes walk to the Queenstown lakefront.

Meals included:            Lunch



---

## Day 6



### Queenstown to Franz Josef Glacier via Wānaka

From Queenstown you'll cross the Crown Range, the highest sealed road in New Zealand to arrive in the Alpine town of Wānaka, gateway to Mt Aspiring National Park. Skirting the shores of both Lake Wanaka and Hawea, you will enter the small town of Makarora. Stop at Blue Pools for a 1-hour return walk through the native beech forest to a glacier-fed swimming hole. Continue on through the remote seaside settlement of Haast before heading up the wild West Coast highway you pass through ancient temperate rainforests while getting sneak peeks of the wild coast beaches occasionally. Keep heading North and be sure to enjoy the view of the ever-changing towering snowcapped Southern Alps Mountain Range. Fox Glacier welcomes you first, then comes your destination for the night Franz Josef township.

---

### Franz Josef

Franz Josef, named after both the local village and the nearby glacier, holds special significance in Māori culture as "Ko Roimata o Hine Hukatere" – The Tears of the Ice Maiden. This rare glacier is one of only three in the world that descends from alpine heights into a temperate rainforest, almost reaching sea level. New Zealand is home to two of these unique glaciers, Franz Josef and Fox Glacier, both highly accessible and popular with visitors. The best ways to experience the glacier are through scenic flights or, for the adventurous, a heli-hike. You can also enjoy glacier views with a short drive from the village and walking tracks. Beyond the glacier, Franz Josef offers a wealth of adventure activities and beautiful forest and alpine walks, making it a must-visit destination.



## SUGGESTED ACTIVITY - Twin Glacier Scenic Helicopter Flight with The Helicopter Line

A spectacular scenic flight soaring over two of New Zealand's most famous glaciers, Fox and Franz Josef. Landing at the head of one and view the incredible sight of this frozen river as it winds its way through ancient carved valleys. It is important to read and understand the risks associated with this activity. A full risk disclosure can be found [here](#).

---

## SUGGESTED ACTIVITY - One Hour Private Tub with Waiho Hot Tubs

Relax and unwind in the soothing comfort of fresh, warm water and aromatic wood smoke. Enjoy your own private tubs, nestled in a lush rainforest setting on New Zealand's West Coast. These wood-fired hot tubs combine the soothing comfort of warm water with the unique atmosphere of wood smoke to give you an unforgettable experience.

---

## SUGGESTED ACTIVITY - Walking tracks in and around Franz Josef

Franz Josef offers many walks and hikes. Each trail offers a unique perspective of this remarkable region, from easy strolls through lush rainforest to more challenging hikes that lead to awe-inspiring glacier views. Visit the Department of Conservation (DOC) info center in Franz Josef Village for updates on track conditions, and suitability, and to learn about the area's natural history and people.

---

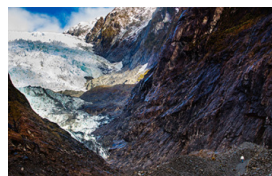
## Your accommodation: Bella Vista Franz Josef

From the moment you arrive at Bella Vista Franz Josef, you'll enjoy the convenience of being located in close proximity to shops, restaurants and other activities, as well as being a short walk to the Glacier Hot Pools. Franz Josef village is the perfect place to stay when exploring New Zealand's glaciers.



---

## Day 7



## Franz Josef to Greymouth Train Station (Return Rental Car)

Head north along the mighty West Coast highway you pass through ancient temperate rainforests while getting sneak peeks of the wild coast beach occasionally. Whataroa is the next town where you can see one of the world's rarest birds, the Kōtuku - White Heron. The Kōtuku nest at the Waitangi Roto Nature Reserve, only accessible with a guided tour from October to March. The next town is Ross which is the site of an old gold mining settlement where the local information centre offers you the chance to pan for gold. Hokitika is a great place to explore craft and gift stores and head to the coast and take in the endless sea views. The Pounamu-Greenstone on offer in Hokitika is probably some of the best you will see in the country. Continue on to Greymouth, the largest town on the West Coast and the starting point for the next leg of your journey the TranzAlpine Scenic Train. Drop your rental car at the Greymouth Train Station depot located at the train station building before boarding your train to Christchurch.

---

## Return Car to City Depot

Spend some time exploring before returning your rental car to the city depot.

---

## TranzAlpine Scenic Train: Greymouth to Christchurch

Considered one of the world's great train journeys, the TranzAlpine Scenic Train takes you from Greymouth to Christchurch. Travel across the South Island from the west to the east coast through Arthur's Pass National Park. From the comfort of your carriage see lush beech forest, deep river valleys and the spectacular peaks of the Southern Alps. Descend to the windswept Canterbury Plains before arriving in the city of Christchurch.

---

## Shared Transfer from Christchurch Train Station to Christchurch CBD Accommodation with Christchurch Touring Company

On arrival at the Christchurch railway station, you will be met by a driver and transferred to your Christchurch accommodation.

---

## SUGGESTED ACTIVITY - TranzAlpine Scenic Plus Addon - KiwiRail

Feel like luxurious service, exclusive meals, inclusive drinks and priority check-in and boarding? The Scenic Plus add-on option is for you. Enjoy personal service with panoramic windows, spacious carriages and comfortable seating. The exclusive open-air viewing carriage is available if you feel like capturing the ultimate photo or simply wish to experience the great outdoors whilst travelling through the Southern Alps. Your food is prepared exclusively in a kitchen carriage, with paired drinks and a paddock-to-plate regionally inspired food menu all your senses will be fully engaged on this journey.

---

## Your accommodation: Quest on Cambridge

Quest on Cambridge serviced apartment-style hotel rooms offer guests a relaxed and comfortable Christchurch accommodation experience. Each room has an open-plan living area, a fully equipped kitchen, and natural light. Quest on Cambridge is a short walk from the south shopping centre and to the Botanic Gardens.



---

## Day 8



### Private Transfer from Christchurch Accommodation to Christchurch International Airport with Christchurch Touring Company

A private transfer will collect you from your accommodation and transfer you to Christchurch International Airport in time for your departing flight.

---

### Farewell from Aotearoa / New Zealand

Bid farewell to Aotearoa / New Zealand, taking with you unforgettable memories of its breathtaking landscapes and incredible adventures. In Māori, it is said mā te wā, which is not goodbye, it is see you soon!

---



## Tour details

Departures:	Daily
Tour type:	South Island Self Drive
Starts:	Christchurch
Finishes:	Christchurch
Tour length:	8
Accommodation:	Motels
Car/transport type:	

---

## Accommodation summary

Day 1	Quest on Cambridge
Day 2	Aoraki Court Motel
Day 3	Bella Vista Dunedin
Day 4	Blue Peaks Lodge
Day 5	Blue Peaks Lodge
Day 6	Bella Vista Franz Josef
Day 7	Quest on Cambridge