



North Island Discovery Tour

Jump into a whirlwind adventure through the North Island's top highlights, tailor-made for first-time visitors! Kick things off in the buzzing hub of Auckland before diving into the bubbling mud pools and incredible Māori culture of Rotorua. Feel the rush with a jetboat ride at Taupō's powerful Huka Falls, then sip your way through the elegant vineyards of Hawke's Bay. Your grand finale awaits in Wellington, a quirky, creative, and utterly delicious capital city. This journey packs all the North Island's must-see sights, thrills, and tastes into one incredible holiday.



Starts in: Auckland
Finishes in: Wellington
Length: 11days / 10nights
Accommodation: Motels
Can be customised: Yes

This itinerary can be customised to suit you perfectly. We can add more days, remove days, change accommodations, mix it up, add activities to suit your interests or simply design and create something from scratch. Call us today to get your custom New Zealand itinerary underway.



Inclusions:

- Includes: Late model rental cars
- Includes: Fully inclusive rental car insurance (excess may apply)
- Includes: Unlimited kms
- Includes: Afterhours emergency support while touring
- Included activity: The Visitor Promise - Cultural Learning Course
- Included activity: Private Transfer Auckland Airport to your Auckland Accommodation with Tourcorp
- Included activity: Electronic Travel Guide and In-Country Support App
- Included activity: Glow Worm Caves Tour with Discover Waitomo
- Included activity: Te Pō Indigenous Evening Experience at Te Puia
- Included activity: Wai-O-Tapu Thermal Wonderland
- 1 special dinner



Day 1



Welcome to Auckland

Welcome to Auckland, known in Māori as Tāmaki Makaurau. Auckland is New Zealand's vibrant "City of Sails," and the country's largest metropolitan area. Nestled between the Pacific Ocean and the Tasman Sea. Surrounded by native bush, lush rainforests, and pristine beaches, Auckland is a haven for both adventurers and urban explorers. Wander through world-class museums and galleries in the city centre or enjoy a peaceful retreat at the Auckland Gardens, where stunning landscapes showcase New Zealand's diverse flora. Stroll along the lively waterfront to savour fresh seafood and international cuisine at Viaduct restaurants. For an unforgettable perspective, ascend the iconic Sky Tower, New Zealand's tallest structure, and take in panoramic views of the city and its picturesque islands.

Private Transfer Auckland Airport to your Auckland Accommodation with Tourcorp

You will be met at the Auckland airport by the driver and transferred to your Auckland accommodation.

Your accommodation: Oaks Auckland Hotel

Oaks Auckland Hotel offers a comfortable self-contained apartment in downtown Auckland. Located a short walk from Britomart Transport and the Viaduct. Enjoy your stay in central Auckland surrounded by delicious eateries or use your in-house kitchenette to dine in!



Day 2



Explore Auckland

Perched on the edge of a large natural harbour, New Zealand's "City of Sails" offers the best of both worlds. Sandy beaches, native bush and lush rainforests give way to a vibrant urban culture. Spend time in the Viaduct Harbour, try your hand at sailing an America's Cup Yacht or take the ferry to nearby Waiheke Island for a gourmet food and wine experience. Venture to the top of Auckland's highest volcano, Mt Eden, for soaring views of the Hauraki Gulf or hop on the short ferry to Rangitoto Island and hike to the top of the volcanic island. Immerse yourself in nature at the expansive Auckland Botanic Gardens, sprawled across 156 acres of native forest, pack a picnic, soak up the sunshine, and enjoy the birdsong. Head up to the Sky Tower, standing over 300m tall, and have a meal in the 360-degree revolving restaurant. Scale the outermost perimeter of the Harbour Bridge or test your stomach with a bungee jump, then end your day on Ponsonby Road sampling upmarket culinary delights.

SUGGESTED ACTIVITY - Waiheke Island Explorer Hop On Hop Off Tour

The most flexible tour on Waiheke Island, introducing you to the island's top spots! Start the tour of at Auckland harbor cruising on the ferry to reach Waiheke Island where you can hop on and off as much as you like at any of the 16 convenient stops which include vineyards, beaches and restaurants. If you prefer, stay on board and enjoy a 1 1/2 hour scenic tour of the island. The buses stop at some of the island's iconic spots including Oneroa Village, Onetangi Beach, Batch Winery, the new Tantalus winery/brewery, Mudbrick Vineyard, Cable Bay Vineyard and more. Knowledgeable tour drivers, and the addition of an on-board host, ensure you'll receive the most informative commentary as you travel around and you can get all the local tips and tricks for how best to enjoy Waiheke. The Explorer Hop on Hop off departs from each hop on hop-off location approximately every 60 minutes throughout the day. At the end of the tour hop on the ferry and cruise the sparkling waters back to the Auckland harbor.

SUGGESTED ACTIVITY - Auckland Sky Tower Admission

Standing at 328 meters (just over 1000 feet) - the Sky Tower is the tallest man-made structure in New Zealand and offers panoramic views of the Auckland landscape. Travel in the glass-fronted lift to one of three spectacular viewing platforms, or for a little more excitement do a SkyWalk - an outside loop around the pergola 192 meters (just over 600 feet) above ground. If you're really bold, Take the quick way down and SkyJump off the tower - a controlled free fall to the base.

Inside, the Sky Lounge offers coffee and light meals while the iconic Orbit Restaurant is Auckland's only 360-degree revolving dining experience.

Your accommodation: Oaks Auckland Hotel

Oaks Auckland Hotel offers a comfortable self-contained apartment in downtown Auckland. Located a short walk from Britomart Transport and the Viaduct. Enjoy your stay in central Auckland surrounded by delicious eateries or use your in-house kitchenette to dine in!



Day 3



Collect Rental Car

This tour's from price includes an intermediate-sized vehicle, setting you up for comfortable travels. Yet, we understand every adventure is unique! Feel free to select the perfect wheels from our incredible collection of rental cars, spanning from economy hatchbacks to premium SUVs.

Auckland to Rotorua via Waitomo

The drive south from Auckland takes you past the rolling Bombay Hills, before turning inland into central Waikato. You'll stop at Waitomo to explore its famous glowworm caves, a magical underground experience. Continuing on, you'll pass through Matamata, where a visit to the fully intact Hobbiton film set from The Lord of the Rings and The Hobbit trilogies is an optional detour. The road then winds through farmland and small towns before telltale signs of steam and other geothermal activity signal your arrival into Rotorua.

Glow Worm Caves Tour with Discover Waitomo

Explore a 30 million year old cave network spread across three levels. You'll travel deep underground through the limestone caves viewing stalactites and stalagmites as well as hearing about the caves historical and geological significance. You'll then hop into a boat and glide silently through the glow worm grotto - a galaxy of tiny living lights.

SUGGESTED ACTIVITY - Hobbiton Movie Set Tour from Shires Rest

In the heart of New Zealand, you can step into the lush pastures of the Shire with a guided tour of Hobbiton, as featured in The Lord of the Rings and The Hobbit Trilogies. Hobbiton is located just outside of Matamata in the heart of the lush Waikato farming region. Here you can visit such iconic Hobbit locations as Hobbit Holes, the Green Dragon Inn, the Mill and the Party Tree with a guide sharing behind-the-scenes tales and insight into the making of the films. Spend time wandering through Bagshot Row before being led inside a Hobbit Hole to view the detailed interior, designed to provide an authentic glimpse into the dwelling of a Hobbit.

SUGGESTED ACTIVITY - Polynesian Spa Adult Pavilion Pools & Priest Spa

Just for adults, this relaxing spa offers seven hot mineral pools with stunning views of Lake Rotorua. Three cascading marble-lined pools (38–39°C) feature alkaline water, perfect for a soothing soak, while a large deeper pool (38°C) is ideal for gentle stretching or floating. The three Priest Spa pools (38–41°C) use acidic Radium spring water, famed for its therapeutic benefits. Spacious changing rooms, lockers, and storage make it easy to enjoy a serene, rejuvenating experience in comfort.

Your accommodation: Silver Fern Suites & Spa

Silver Fern Suites & Spa is located just minutes from Rotorua's city centre and is close to popular thermal attractions, cafes, restaurants and golf courses. Suites have a private spa pool or double spa bath for you to unwind and relax.



Day 4



Explore Rotorua

Peppered with natural hot springs, boiling mud pools and steaming geysers, Rotorua sits within one of the world's most active volcanic regions. Geothermal landmarks aside, this city of sulphur has a rich indigenous history. Home to several prominent Māori tribes, a visit to one of the Māori experiences should be high on your agenda, learn about the special meaning of pounamu-Greenstone with Mountain Jade, explore the geysers and arts of Te Puia or immerse in an evening with Te Pā Tū. An excursion to one of the area's wellness spas is also a must! Try the Polynesian Spa for an invigorating soak in its natural mineral hot springs, Wai Ariki offers an indulging and unwinding restorative journey or pay a quick visit to Secret Spot for a soak and a delicious smash burger! If it is a thrill you are looking for, spike your adrenaline at Rotorua Canopy Tours, soaring above the ancient native forest below. Alternatively, head up the Skyline Rotorua Gondola for soaring lake views, and ride the luge at night for an extra thrill. Make the most of your time in Rotorua with an excursion through the Wai-O-Tapu Thermal Wonderland, one of the area's most colourful volcanic attractions. Whatever you are after, Rotorua is almost certain to have it!

SUGGESTED ACTIVITY - Redwoods Treewalk

Redwoods Treewalk is Rotorua's newest Eco-Tourism attraction. Using ecologically friendly engineering, the Treewalk is suspended from 100-year-old majestic redwoods. Featuring a series of suspension bridges and living decks, elevated from 6-metres to 12-metres at its highest point.

Designed for use without harnesses or protective gear, it is suitable for all ages. The only pre-requisite is that all users must be able to walk the entire 553-metres.

Te Pō - Indigenous Evening Experience

Indulge in Te Puia's world-famous hāngī buffet dinner, served in the inviting atmosphere of Pātaka Kai Restaurant, Bar & Café. The menu, crafted with the freshest ingredients, offers a delightful array of traditional Māori cuisine. This banquet combines contemporary cuisine with a traditional hāngī (earth-cooked oven meal). The evening's cultural performance will take place in an exquisitely carved meeting house, Te Aronui a Rua. Here, you'll experience a rich showcase of Māori traditions, beginning with a pōhiri (traditional welcome), followed by the melodious harmonies of waiata (song), the powerful rhythms of mōteatea (traditional chant), the graceful artistry of poi, and the intense energy of the haka. As the night draws to a close, savor hot chocolate heated in geothermal water and steamed pudding while basking in the enchanting ambiance of the geyser terrace. Bathed in colored light and surrounded by the mystical steam rising from the earth, this unforgettable evening at Te Puia is a feast for the senses and a celebration of Māori culture.

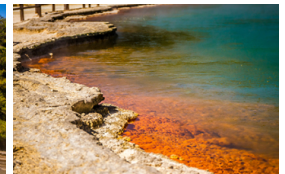
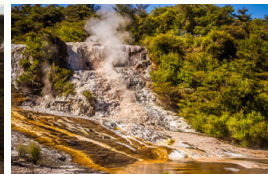
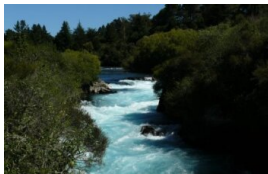
Your accommodation: Silver Fern Suites & Spa

Silver Fern Suites & Spa is located just minutes from Rotorua's city centre and is close to popular thermal attractions, cafes, restaurants and golf courses. Suites have a private spa pool or double spa bath for you to unwind and relax.

Meals included: Speciality Dinner



Day 5



Rotorua to Taupo

Today drive through the heart of the Central North Island volcanic plateau. Visit the geothermal regions Wai O Tapu Thermal Wonderland and Waimangu Volcanic Valley, before arriving into the town of Taupo, which sits on New Zealand's largest lake - Lake Taupo. Just north of the town are the Huka Falls and a short detour to view is highly recommended, as is a visit to the nearby Craters of the Moon geothermal reserve.

Wai-O-Tapu Thermal Wonderland

Wai-O-Tapu Thermal Wonderland is a spectacular showcase of New Zealand's colourful and unique geothermal elements sculpted by thousands of years of volcanic activity. You will be introduced to a diversely different natural landscape, extending over 18-sq. km. Enjoy viewing the volcanic features as you walk at your own pace along well-defined tracks. Relax in the first-class Visitor Centre, home to the Gift Shop and Café facilities. Visit the Mud Pool, the largest in New Zealand, it was originally the site of a large mud volcano which was destroyed through erosion in the 1920s. See the history and beauty of the Lady Knox Geyser at 10:15 am every day where a daily eruption happens of up to 20 metres.

SUGGESTED ACTIVITY - Huka Falls Jet Boat Ride

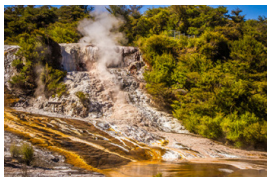
The Huka Jet is 30 minutes of pure fun and exhilaration, skimming close to cliffs, sliding past trees, feeling the adrenalin of full 360 degree spins. The excitement continues right up to the base of the foaming Huka Falls, where you get a spectacular water level view to New Zealand's most visited natural attraction. Nothing compares to watching 220,000 litres per second tumbling over the cliff face towards you. The water from the mighty Huka Falls runs down the Waikato River through a series of Hydro Power Stations. You'll get a view of the Wairakei Geothermal Power Station in the comfort of a powerful Chevrolet V8 jet boat. This unique Geothermal Power Station uses underground geothermal activity to produce hot steamy water. The Waikato Rivers beautiful environment is varied and unique and is New Zealand's longest river flowing north from our largest lake, Lake Taupō. It is important you read and understand the risks associated with this activity. For more information please see [here](#).

Your accommodation: Quality Inn Acapulco Taupo

Situated in a quiet location just off the main road. Walking distance to town center. Offering studio and one bedroom units with free wireless, sky TV and DVD player in all units.



Day 6



Explore Taupo

Nestled on the shores of New Zealand's largest lake, Taupō is a vibrant town surrounded by stunning volcanic landscapes and the peaks of Tongariro National Park, including Mt Ruapehu. The town buzzes with cafes, shops, and bars, while outdoor enthusiasts can choose from bungee jumping, skydiving, fishing, kayaking, sailing, horse riding, or hiking. Don't miss the quirky 'Arte Cafe and Gallery' with its mosaic outdoor living room and iconic 'Alice's Chair'. Just outside town, explore the geothermal wonders of Craters of the Moon, the power of Huka Falls, or take a jet boat ride for an unforgettable view. Taupō perfectly blends natural beauty, thrilling adventures, and unique cultural experiences.

SUGGESTED ACTIVITY - Lake Taupo Scenic Cruise to the Maori Rock Carvings

Cruise the spectacular Great Lake Taupo to the remarkable Maori Rock Carvings and around the picturesque bays of Lake Taupo. Your captain will provide an informative and entertaining commentary on the volcanic creation of Lake Taupo and the Maori mythology of the region. Marvel at the amazing views of hidden bays and the spectacular snow-capped mountain peaks of Tongariro National Park. Your boat is fully enclosed so you will stay warm while still being able to take those fantastic holiday pictures. It is important you read and understand the risks associated with this activity. For more information see [here](#).

SUGGESTED ACTIVITY - Wairakei Terraces Walkway and Thermal Pools

Journey into the mysterious world of the Wairakei Terraces, described by early explorers as a natural phenomenon unlikely to be found anywhere else. You'll wander past the Terraces along the geothermal and Maori cultural walkway where you will discover intricate carvings that depict the history of New Zealand Maori and in particular the local tribe Ngati Tuwharetoa. Observe the geyser as it expels boiling water heated at the Earth's core, this silica rich water flows away into the startling blue pools and cascades over the terraces contributing to their spectacular form. After your walk you'll have time to relax in the therapeutic waters of the Wairakei Thermal Pools and soak up the unique atmosphere.

Your accommodation: Quality Inn Acapulco Taupo

Situated in a quiet location just off the main road. Walking distance to town center. Offering studio and one bedroom units with free wireless, sky TV and DVD player in all units.



Day 7



Taupō to Napier

The road from Taupō climbs the Ahimanawa Range before reaching the Pacific Coast north of Napier, a city famed for its 1930s Art Deco architecture, Mediterranean climate, and over 2,200 hours of sunshine a year. Known as the city by the sea, Napier boasts vibrant cafes, wineries, and local produce, with Marine Parade offering sweeping ocean views toward Cape Kidnappers, home to the world's largest mainland gannet colony. Bluff Hill provides panoramic views of the town, Westshore beaches, and the bustling Port of Napier. A full day can be spent exploring Ocean Spa hot pools, the Hawke's Bay Museum, and the National Aquarium. In 1931, a devastating magnitude 7.8 earthquake destroyed much of Napier and Hastings, killing 258 people. The subsequent rebuilding created the modern Art Deco city we see today, with the Ahuriri Lagoon raised over two metres to allow for future growth.

SUGGESTED ACTIVITY - Craters of the Moon Geothermal Walk

Located a few minutes north of Taupō this geothermal park known as Craters of the Moon has a great self guided 30 minute walk through steaming craters and bubbling mud pools. Well marked walkways with interpretive boards guide you through one of the regions many active volcanic parks.

Napier City

Napier, a coastal gem, is famed for its 1930s Art Deco architecture, the annual Art Deco Weekend, stately Norfolk pines, nearby wineries, and fresh local produce. With a Mediterranean climate and over 2,200 hours of sunshine annually, it boasts a thriving café culture set against stunning heritage buildings. The city center has around 30 cafés within walking distance, while Ahuriri, just beyond Bluff Hill, offers more upscale dining. Marine Parade overlooks the Pacific Ocean and Cape Kidnappers, home to the world's largest mainland gannet colony. Visitors can explore Ocean Spa, the Hawke's Bay Museum, and the National Aquarium of New Zealand. Bluff Hill, a key landmark, provides sweeping views of Napier, Perfume Point, Westshore Beach, and the busy Port of Napier, which exports timber, fruit, and meat worldwide.

In 1931, Napier was devastated by a 7.8-magnitude earthquake, New Zealand's worst natural disaster. Fires ravaged the city. Rebuilding efforts transformed Napier and Hastings into modern cities, while the uplifted Ahuriri Lagoon created much-needed land for expansion.

Your accommodation: Bella Vista Napier

Bella Vista Motel Napier invites you to experience its friendly service and modern motel units. Located close to shops, restaurants and the renowned Marine Parade with its majestic Norfolk pines.



Day 8



Explore Hawke's Bay

Discover Hawke's Bay, known in Māori as Te Matau-a-Māui or the fish hook of Māui. This is a region renowned for its Mediterranean charm, iconic Art Deco architecture, and award-winning wineries. Explore Mission Estate, the birthplace of New Zealand wine, or tour vineyards for a deeper dive into its winemaking legacy. Fans of the 1930s can enjoy a Vintage Car Tour, showcasing Napier's architectural gems. Outdoor enthusiasts can cycle over 200km of scenic trails or unwind at pristine beaches like Ocean and Waimarama. Indulge your taste buds with local delights, from honey and chocolate to fresh orchard produce. The Hawke's Bay is also home to an abundance of wildlife, head out on a Gannet Safari or educate yourself at the National Aquarium of New Zealand.

Walking tracks in and around Hawke's Bay

Hawke's Bay offers a variety of scenic walks, from coastal paths to forest trails, perfect for exploring the region's natural beauty. Whether you're looking for a short stroll or a more challenging hike, there's something for everyone. Be sure to check with the Department of Conservation for current conditions before heading out.

SUGGESTED ACTIVITY - Cape Coast Winery Tour with Takaro Trails

Cycle one of Hawke's Bay's most scenic coastal trails, visiting some of the region's best wineries along the way. Starting in Clifton near Cape Kidnappers, you'll enjoy ocean views, riverside trails, charming coastal villages, and tastings at renowned wineries such as Clearview Estate, Elephant Hill, Askerne, Te Mata Estate, and Black Barn. Take time for a relaxed lunch at a vineyard or cafe, then finish your day with a return shuttle to Napier. Includes e-bike hire, helmet, pannier, maps, and start/end shuttles. Wine tasting costs extra.

Your accommodation: Bella Vista Napier

Bella Vista Motel Napier invites you to experience its friendly service and modern motel units. Located close to shops, restaurants and the renowned Marine Parade with its majestic Norfolk pines.



Day 9



Napier to Wellington via Kapiti Coast

Journey from the charming Art Deco city of Napier through rolling vineyards and picturesque countryside as you head towards Wellington. Enjoy the scenic drive along the stunning Kapiti Coast, with views of the rugged shoreline and tranquil beaches. As you approach the capital, you'll be greeted by Wellington's vibrant culture, bustling waterfront, and renowned culinary scene. A perfect blend of natural beauty and urban excitement awaits on this unforgettable road trip.

Wellington

Wellington known in Māori as Te Whanganui-a-Tara is home to New Zealand's centre of government. Often referred to as 'mini Melbourne', this windy city is a melting pot of art, culture, food, and fashion. Quirky laneway bars, underground art shows, and hipster eateries make up its inner-city vibe, while a host of sandy beaches outside the urban bustle bring a cheerful holiday feel. Head to Te Papa Museum for a history lesson and a ticket to one of its many international exhibitions or jump aboard the Wellington Cable Car - the only running funicular railway in the country. For those with an eye for boutique, fashion wander through Cuba St to sample some of the city's best vintage stores. Break for coffee at a hipster cafe and be sure to snap a pic outside the 'Beehive', New Zealand's parliamentary debate chamber. Go behind the scenes at Weta Workshop Experience, the Oscar Award Winning design studio behind Lord Of The Rings, The Hobbit, and Avatar. If you're a foodie at heart, a two-hour round trip to Martinborough is a must-do. Take your time as you wind through spectacular wine country. For an educational day out, learn about New Zealand's native species at Zealandia, the world's first fully-fenced eco-sanctuary and home to over 40 types of endangered and native birds.

SUGGESTED ACTIVITY - Wellington Cable Car

Take a ride on the historic Wellington Cable Car and enjoy stunning views of the city and harbour, Te Whanganui-a-Tara, as you ascend Kelburn Hill in just five minutes. At the top, visit the Cable Car Museum to see the original machinery and watch a short film about its history, or browse the gift shop. Just a short walk away, Space Place at Carter Observatory offers interactive exhibits and a digital planetarium exploring the Southern skies. If you have time, stroll back down through the scenic Wellington Botanic Garden.

Your accommodation: Bella Vista Wellington

Bella Vista Wellington is just 5 minutes walk from local beaches and the beautiful waters of Evans Bay. Enjoy the convenience of being located in close proximity to the Wellington CBD, shops, entertainment and other activities.



Day 10



Explore Wellington

Wellington, known in Māori as Te Upoko o te Ika a Maui ("The Head of the Fish of Maui") or Te Whanganui a Tara ("The Great Harbour of Tara"), is New Zealand's vibrant capital. Often called a "mini-Melbourne," this cosmopolitan city blends art, culture, food, and fashion with quirky laneway bars, hip eateries, and underground art shows. Stroll the waterfront to Te Papa, New Zealand's national museum, or ride the historic cable car from Lambton Quay for stunning city views. Explore Cuba Street's unique boutiques and visit the iconic "Beehive" at Parliament. Fans of The Lord of the Rings can tour Weta Workshop, the Oscar-winning design studio behind Middle-earth. Just an hour away, Martinborough offers a culinary escape with top-notch food and wine. Nature lovers can't miss Zealandia, the world's first fully fenced eco-sanctuary. End your day sampling Wellington's renowned dining scene—search 'Metro Eats' for the city's best spots.

SUGGESTED ACTIVITY - Entry to Te Papa The Museum of New Zealand

Te Papa Tongarewa, meaning "Container of Treasures," is New Zealand's national museum, located on Wellington's stunning waterfront. Renowned for its bold and innovative approach, Te Papa seamlessly blends science, art, history, and Māori culture into interactive and thought-provoking exhibitions. Visitors can explore everything from colossal squid and geological wonders to contemporary art and powerful stories of Aotearoa's people. A visit to Te Papa is more than a museum experience, it's an inspiring journey through the heart of New Zealand's identity.

SUGGESTED ACTIVITY - Zealandia By Night Wildlife Sanctuary Tour

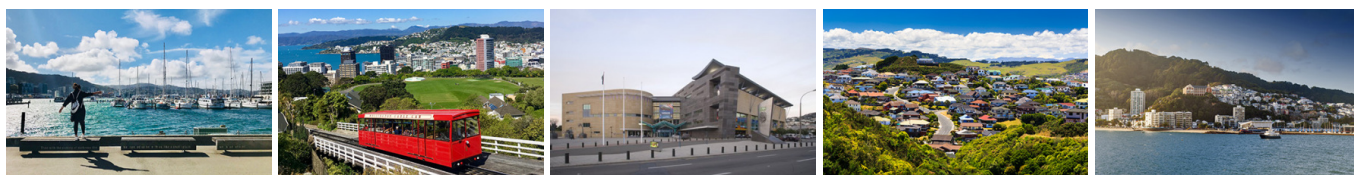
Taking a night tour of Zealandia wildlife eco-sanctuary is an unforgettable experience and one that comes highly recommended. A conservation success and safe haven for some of New Zealand's rarest native animals, Zealandia is home to many remarkable species of birds, reptiles and insects living wild within a beautiful 225 hectare (one square mile) valley, just 10 minutes from the central city.

Your accommodation: Bella Vista Wellington

Bella Vista Wellington is just 5 minutes walk from local beaches and the beautiful waters of Evans Bay. Enjoy the convenience of being located in close proximity to the Wellington CBD, shops, entertainment and other activities.



Day 11



Depart Wellington today

Choose to explore more of Wellington's sights before dropping your rental car at the airport depot and continuing your onward journey.

Farewell from Aotearoa-New Zealand

Bid farewell to Aotearoa-New Zealand, taking with you unforgettable memories of its breathtaking landscapes and incredible adventures. In Maori, it is said mā te wā, which is not goodbye, it is see you soon!

Tour details

Departures:	Daily
Tour type:	North Island Self Drive
Starts:	Auckland
Finishes:	Wellington
Tour length:	11
Accommodation:	Motels
Car/transport type:	

Included activities

Includes	Private airport transfers
Includes	Private train station transfers

Accommodation summary

Day 1	Oaks Auckland Hotel
Day 2	Oaks Auckland Hotel
Day 3	Silver Fern Suites & Spa
Day 4	Silver Fern Suites & Spa
Day 5	Quality Inn Acapulco Taupo
Day 6	Quality Inn Acapulco Taupo
Day 7	Bella Vista Napier
Day 8	Bella Vista Napier
Day 9	Bella Vista Wellington
Day 10	Bella Vista Wellington