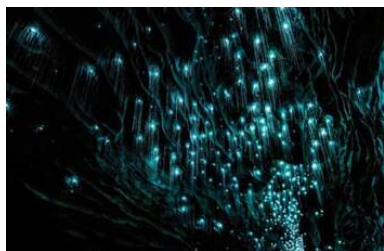


## Northern Middle Earth Explorer

Journey through Middle-earth on this North Island tour. Step into the Shire at Hobbiton, enjoy a themed banquet, and explore Rotorua's geothermal wonders. Marvel at Mordor's dramatic landscapes in Tongariro National Park, and cruise Lake Taupo to see intricate Māori rock carvings. Conclude in Wellington with an exclusive Wētā Workshop tour, uncovering the cinematic artistry behind The Lord of the Rings. This bespoke adventure combines stunning scenery, cultural immersion, and Tolkien-inspired magic.



Starts in: Auckland  
Finishes in: Wellington  
Length: 10days / 9nights  
Accommodation: Hotel 4 star  
Can be customised: Yes

This itinerary can be customised to suit you perfectly. We can add more days, remove days, change accommodations, mix it up, add activities to suit your interests or simply design and create something from scratch. Call us today to get your custom New Zealand itinerary underway.



### Inclusions:

Includes: Late model rental cars

Includes: Unlimited kms

Included activity: Private Transfer Auckland Airport to your Auckland Accommodation with Tourcorp

Included activity: Auckland Sky Tower Admission

Included activity: Private Transfer Wellington Hotel to Airport with In Style Executive

Included activity: Behind the Scenes Tour at Hobbiton

Included activity: Private Footwhistle Glowworm Cave Tour with CaveWorld

Included activity: Sky Waka Gondola Sightseeing Trip with Whakapapa - Open Dated Voucher

Included activity: Guided Tour of Te Papa The Museum of New Zealand

: 9 breakfasts, 2 lunches

Includes: Fully inclusive rental car insurance (excess may apply)

Includes: Afterhours emergency support while touring

Included activity: Electronic Travel Guide and In-Country Support App

Included activity: The Visitor Promise - Cultural Learning Course

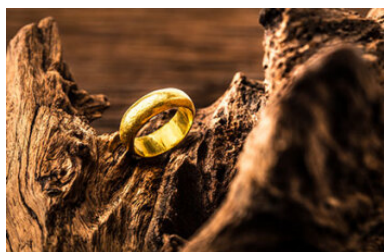
Included activity: Coast and Rainforest Full Day Tour with Bush and Beach - Lunch Included

Included activity: Hairy Feet Scenic Film Location Tour

Included activity: Premium Half Day Tongariro Alpine Tour with Adrift

Included activity: Lord Of The Rings Half Day Private Tour with Capital Personalised Tour

Included activity: Zealandia by Night Wildlife Sanctuary Tour



## Day 1



### Private Transfer Auckland Airport to your Auckland Accommodation with Tourcorp

You will be met at the Auckland airport by the driver and transferred to your Auckland accommodation.

### Welcome to Auckland

Welcome to Auckland, known in Māori as Tāmaki Makaurau. Auckland is New Zealand's vibrant "City of Sails," and the country's largest metropolitan area. Nestled between the Pacific Ocean and the Tasman Sea. Surrounded by native bush, lush rainforests, and pristine beaches, Auckland is a haven for both adventurers and urban explorers. Wander through world-class museums and galleries in the city centre or enjoy a peaceful retreat at the Auckland Gardens, where stunning landscapes showcase New Zealand's diverse flora. Stroll along the lively waterfront to savour fresh seafood and international cuisine at Viaduct restaurants. For an unforgettable perspective, ascend the iconic SkyTower, New Zealand's tallest structure, and take in panoramic views of the city and its picturesque islands.

### Auckland Sky Tower Admission

Standing at 328 meters (just over 1000 feet) - the Sky Tower is the tallest man-made structure in New Zealand and offers panoramic views of the Auckland landscape. Travel in the glass-fronted lift to one of three spectacular viewing platforms, or for a little more excitement do a SkyWalk - an outside loop around the pergola 192 meters (just over 600 feet) above ground. If you're really bold, Take the quick way down and SkyJump off the tower - a controlled free fall to the base.

Inside, the Sky Lounge offers coffee and light meals while the iconic Orbit Restaurant is Auckland's only 360-degree revolving dining experience.

### Your accommodation: M Social Hotel Auckland

A contemporary hotel for the curious, the explorers and those who thrive on new experiences. Functionally chic, this contemporary hotel overlooks the vibrant Princes Wharf that is home to a good array of dining, entertainment and shopping experiences.



## Day 2



### Coast and Rainforest Full Day Tour with Bush and Beach - Lunch Included

Your full-day excursion takes you first to the Arataki Visitor Centre, the gateway to the Waitakere Ranges and a short drive from Auckland Central. Enjoy panoramic views extending from the Tasman Sea to the Pacific Ocean as you absorb the area's history and admire the magnificent traditional Māori carvings. Walk the regenerating rainforest where your experienced guide will detail local flora and fauna. Take in the giant tree ferns, and bubbling streams before venturing onto a wild west coast beach. Enjoy a picnic lunch before your eco-tour ends in an area of untamed original rainforest. Here, mature 200-300-year-old kauri trees have developed separately from the rest of the world for millions of years and this part of the rainforest is particularly rich in bird life due to a successful programme to eradicate pests.

### Your accommodation: M Social Hotel Auckland

A contemporary hotel for the curious, the explorers and those who thrive on new experiences. Functionally chic, this contemporary hotel overlooks the vibrant Princes Wharf that is home to a good array of dining, entertainment and shopping experiences.

Meals included: Breakfast, Lunch





## Day 3



### Collect Rental Car

This tour's from price includes an intermediate-sized vehicle, setting you up for comfortable travels. Yet, we understand every adventure is unique! Feel free to select the perfect wheels from our incredible collection of rental cars, spanning from economy hatchbacks to premium SUVs.

---

### Auckland to Hobbiton via Matamata

Head southbound on State Highway one through the lush farmland and dairy pastures of the Waikato region. The Bombay Hills mark the outer boundary of the greater Auckland area and its here you turn inland towards Matamata. This is the real Middle Earth, and you'll see many locations used in the filming of The Lord of The Rings and The Hobbit, as well as visiting the actual set of Hobbiton.

---

### Behind the Scenes Tour at Hobbiton

Immerse yourself in the magic of Middle-earth on this exclusive walking tour of the Hobbiton Movie Set. In a small group of up to 30, explore the iconic 12-acre set, wander past famous Hobbit Holes and Bagshot Row, and step inside a Hobbit's home. Relax at The Green Dragon Inn with a drink from the Southfarthing range, then savour a hearty banquet lunch at The Millhouse, with second helpings encouraged. Go behind the scenes in the Art Department's workshop to uncover the craftsmanship behind Hobbiton's enchanting details. Conclude your adventure with a Hobbit-style platter of cheese, chutneys, and fruit at a hidden spot with stunning views.

---

### Matamata (Hobbiton) to Cambridge

Heading south from Matamata you will travel through the rolling green Waikato countryside to the small township of Cambridge. Renowned for producing racing horses, the town is centred around a traditional village green, giving Cambridge the feel of an English country town and making it well worth a stop to explore the cafes and antique stores.

---

### Your accommodation: Hidden Lake Hotel & Apartments

Hidden Lake is a luxury new Solar Hotel with a broad palette of natural, sustainable and design aesthetics. Comfort is defined in its leisurely manner. Rooms and apartments reflect the woodland setting with floor to ceiling windows and splashes of colour. Features and facilities show creative flair and a commitment to sustainability and organic produce.

Meals included: Breakfast, Lunch



## Day 4



### Cambridge to Waitomo

Continue on to Otorohanga - renowned for its celebration of New Zealand's popular culture 'Kiwiana.' Stop for a visit to the 'Kiwi House' a native bird park owned and operated by the Otorohanga Zoological Society, dedicated to the conservation of New Zealand's native wildlife. Within the park you will find nocturnal kiwi houses, Tuataras and many native and endangered birds. From Otorohanga it is only a short drive to the limestone hills that mark the Waitomo region and its famous cave complex.

---

### Hairy Feet Scenic Film Location Tour

Visit the stunning farm location at Mangaotaki Rocks Piopio - near Waitomo - where the troll and campfire scenes in 'The Hobbit' were filmed. You'll see the towering limestone cliffs, massive rock formations and primeval forest that make up the location for Staddle Farm and Trollshaws. You can also have your photo taken in the exact spot where Bilbo received his magical sword 'Sting' from Gandalf. You'll join a personally guided tour of several key filming locations including the site where the Orcs and Wargs began attacking and the 'exit from the cave' containing the troll hoard.

---

## Private Footwhistle Glowworm Cave Tour with CaveWorld

Your tour begins as you are picked at the Waitomo iSite and enjoy a scenic shuttle to Caveworld's family owned cave, while your guide provides commentary bringing the rich history of Waitomo to life. Here you will take a short walk through the breathtaking New Zealand bush, keeping an eye out for the native birdlife. Heading down to the entrance of the cave you will discover the beauty of the glowworms, learn about the formation of Footwhistle Cave - known to local Maori as Te Anaroa Cave. You are encouraged to bring along your cameras a tripods to freeze the beautiful twinkling lights in time, with dim solar-powered lights through the cave that allow you to appreciate the magnificent displays and get the perfect shot. Complete your intimate tour with a Kawakawa tea as you relax in a ponga hut nestled into the native surrounds.

---

## Waitomo to Turangi

Driving south from Waitomo you'll pass through the rugged rural countryside of the King Country, named after the Maori King Tawhiao who lived in exile here in the mid 1800's. Limestone formations are also a feature of the region, as well as Waitomo, nearby Piopio has some remarkable cliffs which were filmed for the Hobbit movies. Further south you will arrive in a small town called Taumarunui, located at the junction of the Whanganui and Ongarue Rivers. Taumarunui is the launching point for canoe trips into the Whanganui National Park and is a popular trout fishing destination. After you pass through Taumarunui, turn left onto state highway 41. You will pass through the small historic town of Tokaanu, well worth a visit with its thermal activity pools and power station. Further down the road is your destination of Turangi, situated at the southern end of Lake Taupo. Turangi and its surrounding countryside offers hunting, fishing, mountain biking, hiking, kayaking and much more.

---

## Your accommodation: River Birches Lodge

Set within a peaceful garden-landscape beside the world-famous Tongariro River, try your hand at trout fishing in one of New Zealand's most beautiful rivers by day, and enjoy the luxury lodge accommodation by night. River Birches is a short drive from the Tongariro National Park, where you can select from a range of exciting activities.

Meals included: Breakfast



## Day 5



## Tongariro National Park

Tongariro National Park, New Zealand's oldest national park, is also the fourth place on earth to be designated a UNESCO World Heritage Site. The park features three prominent volcanoes: Mount Tongariro, Mount Ruapehu, and Mount Ngauruhoe. Mount Ngauruhoe and Mount Ruapehu are two of the world's most active composite volcanoes, with notable eruptions from Ruapehu in 1995 and 1996, and Tongariro in 2012. Despite this activity, the volcanoes are closely monitored to ensure visitor safety. When visiting Tongariro National Park, take advantage of the incredible outdoor activities available. In the winter, you can ski or enjoy snow play on Mt Ruapehu Ski Field. In the summer, the world-famous Tongariro Alpine Crossing is a must-do. This one-day hike, taking 6 to 8 hours, is one of New Zealand's Great Walks and will lead you past the stunning Emerald and Blue Lakes and unique volcanic landscapes. For those looking for other hiking options, the park offers a variety of tracks and trails suitable for all abilities, including shorter walks and a guided 3.5-day Tongariro Northern Circuit. You can also experience true isolation by exploring deep canyons and ancient forests along the Whanganui River or walking along ancient lava flows and glacier streams to the Taranaki Falls. After a day of exploring, stop by Pataka Caf   at Whakapapa to enjoy a meal with an incredible mountain view.

---

## Premium Half Day Tongariro Alpine Tour with Adrift

Begin your journey on the Tongariro Crossing track and immerse yourself in its splendour as you hike through the volcanic landscape, culminating at the picturesque Soda Springs waterfall. Mt. Ngauruhoe's cold water springs create a small oasis adorned with lush yellow mountain buttercups and white foxgloves. The pristine Soda Springs provides an opportunity to refill your water bottles with pure Tongariro spring water while enjoying morning tea. Learn several aspects of Tongariro and New Zealand, including recent and historical eruptions, geology, flora and fauna, and the settlement of New Zealand. It is important you read and understand the risks associated with this activity. For more information see [here](#).

---

## Your accommodation: River Birches Lodge

Set within a peaceful garden-landscape beside the world-famous Tongariro River, try your hand at trout fishing in one of New Zealand's most beautiful rivers by day, and enjoy the luxury lodge accommodation by night. River Birches is a short drive from the Tongariro National Park, where you can select from a range of exciting activities.

Meals included: Breakfast



## Day 6



### Sky Waka Gondola Sightseeing Trip with Whakapapa - Open Dated Voucher

During the summer months you can take advantage of the skifield facilities and take the gondola over Mt Ruapehu's otherworldly terrain. You'll travel to an altitude of 2020 metres where you'll be treated to magnificent views of Tongariro National Park, including the iconic peaks of Mt Ruapehu, Mt Tongariro and Mt Ngauruhoe, the latter featured as Mt Doom in the Lord of the Rings movies.

### Walking tracks in and around Whakapapa Village, Tongariro National Park

There are a plethora of walks in and around Whakapapa Village and Tongariro National Park. From short 15 minute hikes to longer 5 hour treks, there is something for every level of fitness. All established tracks are maintained by the Department of Conservation and before heading out on a walk, it is best to check the track conditions and suitability at the local DOC information office in the centre of the village. Below are a selection of the best walks to do: Whakapapa Nature Walk, 15 min loop track Mounds Walk, 20 min one way Tawhai Falls, 20 min one way Ridge Track, 40 min return Taranaki Falls, 2 hour return Whakapapanui Walk, 2 hour return Tupapakurua Falls Track, 5 hour return

### Your accommodation: River Birches Lodge

Set within a peaceful garden-scape beside the world-famous Tongariro River, try your hand at trout fishing in one of New Zealand's most beautiful rivers by day, and enjoy the luxury lodge accommodation by night. River Birches is a short drive from the Tongariro National Park, where you can select from a range of exciting activities.

Meals included: Breakfast



## Day 7



### Turangi to Wellington

From Turangi you climb up onto the central plateau and the high country Rangipo Desert. Skirting Tongariro National Park, one of New Zealand's three world heritage sites and clouds permitting you can see the 2,500 metre peak of the still volcanically active Mt. Ruapehu. You might recognise the symmetrical shape of Mt. Ngauruhoe as this was used as the scenery of Mt. Doom in the Lord of the Rings Trilogy. A little further the military town of Waiouru also hosts the Army Museum, an incredible collection of New Zealand's military history and a memorial to its servicemen. Heading south you pass through the rural towns of Taihape, Mangaweka and Bulls before arriving on the Kapiti Coast. The coastal seaside towns of Paraparaumu, Paekakariki and Plimmerton are worth a short detour before arriving into the capital city of Wellington. Plan to take most of the day for this drive.

Wellington City is New Zealand's capital. It sits on a wonderful deep natural harbour and is surrounded by bush clad hills. The city centre itself is quite compact (only around 1 square kilometre) and so exploring on foot is relatively easy. From your city centre accommodation you can easily stroll the cafes and restaurants around Courtenay Place and if you arrive early enough New Zealand's national museum, Te Papa, is also close by.

### Wellington

Wellington known in Māori as Te Whanganui-a-Tara is home to New Zealand's centre of government. Often referred to as 'mini Melbourne', this windy city is a melting pot of art, culture, food, and fashion. Quirky laneway bars, underground art shows, and hipster eateries make up its inner-city vibe, while a host of sandy beaches outside the urban bustle bring a cheerful holiday feel. Head to Te Papa Museum for a history lesson and a ticket to one of its many international exhibitions or jump aboard the Wellington Cable Car - the only running funicular railway in the country. For those with an eye for boutique, fashion wander through Cuba St to sample some of the city's best vintage stores. Break for coffee at a hipster cafe and be sure to snap a pic outside the 'Beehive', New Zealand's parliamentary debate chamber. Go behind the scenes at Weta Workshop Experience, the Oscar Award Winning design studio behind Lord Of The Rings, The Hobbit, and Avatar. If you're a foodie at heart, a two-hour round trip to Martinborough is a must-do. Take your time as you wind through spectacular wine country. For an educational day out, learn about New Zealand's native species at Zealandia, the world's first fully-fenced eco-sanctuary and home to over 40 types of endangered and native birds.

### Return your rental car

Return your rental vehicle to your designated depot before your next adventure.



## Your accommodation: Naumi Hotel Wellington

Naumi Studio Wellington, an iconic heritage landmark in the heart of the Cuba Street precinct. After an extensive renovation, this 116-room property has transformed into visual feast for the senses, enthralling guests with eclectic spaces inspired from seafaring, the library world and enduring love.

Meals included: Breakfast



---

## Day 8



### Lord Of The Rings Half Day Private Tour with Capital Personalised Tour

Prepare for an unforgettable LOTR adventure. Leaving Wellington, you will first head for the hills, admiring views from Mt Victoria before visiting Hobbit's Hideaway in the 'Outer Shire'. Next, immerse yourself at the Weta Cave in Miramar. Tour the museum, shop, and capture photos with iconic movie props. Experience the fascinating 'Weta Workshop Experience', going behind-the-scenes to see props and weaponry, with artists describing their creations. After a magical cinematic journey, you will return to Wellington.

---

## Your accommodation: Naumi Hotel Wellington

Naumi Studio Wellington, an iconic heritage landmark in the heart of the Cuba Street precinct. After an extensive renovation, this 116-room property has transformed into visual feast for the senses, enthralling guests with eclectic spaces inspired from seafaring, the library world and enduring love.

Meals included: Breakfast



---

## Day 9



### Explore Wellington

Wellington, known in Māori as Te Upoko o te Ika a Maui ("The Head of the Fish of Maui") or Te Whanganui a Tara ("The Great Harbour of Tara"), is New Zealand's vibrant capital. Often called a 'mini-Melbourne', this cosmopolitan city blends art, culture, food, and fashion with quirky laneway bars, hip eateries, and underground art shows. Stroll the waterfront to Te Papa, New Zealand's national museum, or ride the historic cable car from Lambton Quay for stunning city views. Explore Cuba Street's unique boutiques and visit the iconic 'Beehive' at Parliament. Fans of The Lord of the Rings can tour Weta Workshop, the Oscar-winning design studio behind Middle-earth. Just an hour away, Martinborough offers a culinary escape with top-notch food and wine. Nature lovers can't miss Zealandia, the world's first fully fenced eco-sanctuary. End your day sampling Wellington's renowned dining scene—search 'Metro Eats' for the city's best spots.

---

### Guided Tour of Te Papa The Museum of New Zealand

Beginning over one hundred million years ago, join your guide on a journey through New Zealand's rich history and cultures. Hear stories of our adaptive wildlife, the resilience of the Māori people, and artistic interpretations of life in the South Pacific.

Whether you have limited time or here for an extended visit, this tour will give you a great opportunity to understand the vibrant landscapes and cultures you will encounter throughout Aotearoa New Zealand.

---

### Zealandia By Night Wildlife Sanctuary Tour

Taking a night tour of Zealandia wildlife eco-sanctuary is an unforgettable experience and one that comes highly recommended. A conservation success and safe haven for some of New Zealand's rarest native animals, Zealandia is home to many remarkable species of birds, reptiles and insects living wild within a beautiful 225 hectare (one square mile) valley; just 10 minutes from the central city.

## Your accommodation: Naumi Hotel Wellington

Naumi Studio Wellington, an iconic heritage landmark in the heart of the Cuba Street precinct. After an extensive renovation, this 116-room property has transformed into visual feast for the senses, enthralling guests with eclectic spaces inspired from seafaring, the library world and enduring love.

Meals included: Breakfast



---

## Day 10



### Private Transfer Wellington Hotel to Airport with In Style Executive

You will be collected from your Wellington hotel and transferred to the airport.

---

### Farewell from Aotearoa-New Zealand

Bid farewell to Aotearoa-New Zealand, taking with you unforgettable memories of its breathtaking landscapes and incredible adventures. In Maori, it is said mā te wā, which is not goodbye, it is see you soon!

---

## Tour details

Departures:	Daily
Tour type:	Self Drive Tour (FTNZ ONLY)
Starts:	Auckland
Finishes:	Wellington
Tour length:	10
Accommodation:	Hotel 4 star
Car/transport type:	

---

## Included activities

Includes	Private airport transfers
Includes	Hobbiton Movie Set Tour, Matamata
Includes	Coast and Rainforest full day tour, Auckland
Includes	Waitomo Adventures Lost World Tour
Includes	Weta Cave Workshop Tour, Wellington
Includes	LOTR Film Locations Tour, Wellington

---

## Accommodation summary

Day 1	M Social Hotel Auckland
Day 2	M Social Hotel Auckland
Day 3	Hidden Lake Hotel & Apartments
Day 4	River Birches Lodge
Day 5	River Birches Lodge
Day 6	River Birches Lodge
Day 7	Naumi Hotel Wellington
Day 8	Naumi Hotel Wellington
Day 9	Naumi Hotel Wellington