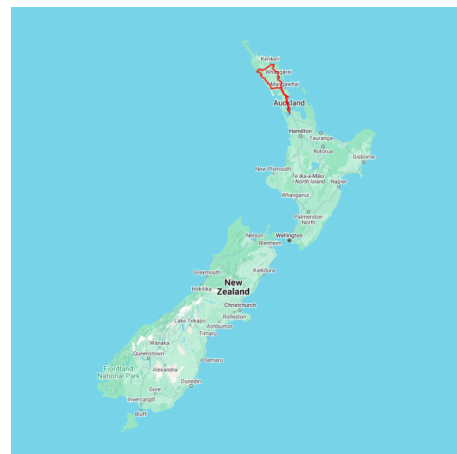


## Northland Treasures Escape

Begin your adventure in Auckland with an engaging introduction to Kiwi culture at The All Blacks Experience. The next day, pick up your car and head north to Paihia in the beautiful Bay of Islands, where you can immerse yourself in Māori culture. On your second day, take a scenic cruise around the bay and relax during the afternoon. On the final day of your tour, travel through ancient Kauri forests and unwind at the stunning Snells Beach.

Starts in: Auckland  
 Finishes in: Auckland  
 Length: 5days / 4nights  
 Accommodation: Hotel 4 star  
 Can be customised: Yes

This itinerary can be customised to suit you perfectly. We can add more days, remove days, change accommodations, mix it up, add activities to suit your interests or simply design and create something from scratch. Call us today to get your custom New Zealand itinerary underway.



### Inclusions:

Includes: Late model rental cars  
 Includes: Fully inclusive rental car insurance (excess may apply)  
 Includes: Unlimited kms  
 Includes: Afterhours emergency support while touring  
 Included activity: Private Transfer Auckland Airport to your Auckland Accommodation with Tourcorp  
 Included activity: Electronic Travel Guide and In-Country Support App  
 Included activity: All Blacks Experience  
 Included activity: The Visitor Promise - Cultural Learning Course  
 Included activity: Waitangi Treaty Grounds Guided Tour and Cultural Performance  
 Included activity: Island Hopper Day Cruise with Barefoot Sailing Adventures - Lunch Included  
 Included activity: Manea Footprints of Kupe Guided Tour  
 Included activity: Matakōhe Kauri Museum  
 4 breakfasts

## Day 1



### Private Transfer Auckland Airport to your Auckland Accommodation with Tourcorp

You will be met at the Auckland airport by the driver and transferred to your Auckland accommodation.

### Welcome to Auckland

Welcome to Auckland, known in Māori as Tāmaki Makaurau. Auckland is New Zealand's vibrant "City of Sails," and the country's largest metropolitan area. Nestled between the Pacific Ocean and the Tasman Sea. Surrounded by native bush, lush rainforests, and pristine beaches, Auckland is a haven for both adventurers and urban explorers. Wander through world-class museums and galleries in the city centre or enjoy a peaceful retreat at the Auckland Gardens, where stunning landscapes showcase New Zealand's diverse flora. Stroll along the lively waterfront to savour fresh seafood and international cuisine at Viaduct restaurants. For an unforgettable perspective, ascend the iconic SkyTower, New Zealand's tallest structure, and take in panoramic views of the city and its picturesque islands.

### All Blacks Experience

See what it takes to make, shape and be an All Black. Experience first-hand the excitement and emotion of game day. Discover the stories behind some of world rugby's most famous players, moments, and matches.

This guided experience introduces you to the game of rugby including state-of-the-art displays combining sound, images, interactive technology, and hands-on activities. Discover New Zealand's deep passion for our national sport, experience the full force of the All Blacks haka, and tackle interactive zones where you can try out your kicking, catching, line-out, and accuracy skills against legendary All Blacks.

### SUGGESTED ACTIVITY - Harbour Sailing Dinner Cruise with Explore

This unique on-water sailing and dining experience is not to be missed while you're in Auckland. Enjoy smooth sailing on the Waitemata Harbour - then watch this photogenic city come alive with twinkling lights. Enjoy your meal as you sail around the beautiful Auckland Harbour taking in the view as the sun slowly sets. You'll be treated to canapes and a drink as you set off towards Westhaven Marina. To finish the evening off, savour your dessert course as you leisurely sail back to Auckland's vibrant Viaduct Harbour.

### Your accommodation: M Social Hotel Auckland

A contemporary hotel for the curious, the explorers and those who thrive on new experiences. Functionally chic, this contemporary hotel overlooks the vibrant Princes Wharf that is home to a good array of dining, entertainment and shopping experiences.



## Day 2



### Collect Rental Car

This tour's from price includes an intermediate-sized vehicle, setting you up for comfortable travels. Yet, we understand every adventure is unique! Feel free to select the perfect wheels from our incredible collection of rental cars, spanning from economy hatchbacks to premium SUVs.

### Auckland to Paihia

The drive from Auckland to the Bay of Islands takes approximately 3.5 hours, but allow extra time to enjoy the sights along the way. Pause for a breath of fresh salty air in Whangarei, where you can explore scenic highlights like the Whangarei Falls or the lively Town Basin. Further along, take a break in Kawakawa known for its quirky, world-famous Hundertwasser Toilets. As you approach Paihia, the gateway to the Bay of Islands, soak in the stunning views of native bush and endless golden beaches that define this iconic Northland region.



## Paihia, Bay of Islands

Paihia, an oceanside gem, played a pivotal role in Aotearoa-New Zealand's history. A visit to the Waitangi Treaty Grounds offers a profound look into the signing of the Waitangi Treaty, where 43 Māori chiefs and 39 Crown representatives shaped the nation's future. Beyond its rich history, Paihia is a haven for water-based activities. From sailing through the Hole in the Rock and dolphin spotting to kayaking or fishing, or perhaps a day relaxing on the beach, this picturesque coastal town is the perfect base to explore the stunning Bay of Islands.

### Waitangi Treaty Grounds Guided Tour and Cultural Performance

Waitangi is one of New Zealand's most historic sites where the Treaty of Waitangi was signed in 1840 between the Māori and the British Government. This two day pass allows you access to the Treaty of Waitangi Grounds and includes admission to the Te Kōngahu Museum and Te Rau Aroha Museum and a Maori Cultural performance. During your guided tour, learn about the history of the treaty and discover the stories and events that shaped New Zealand. The cultural performance inside the carved meeting house includes waiata (singing), poi and the haka - a war dance Aotearoa-New Zealand is well known for.

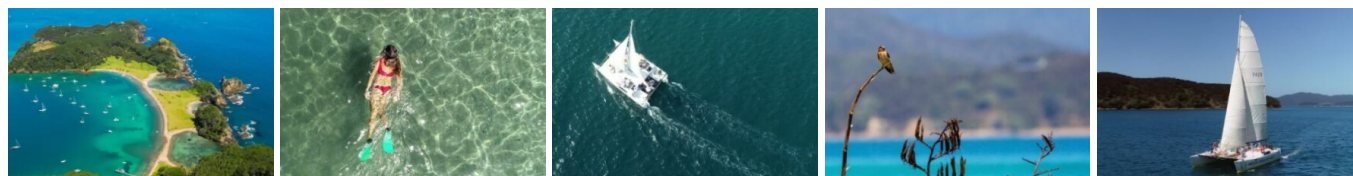
### Your accommodation: Copthorne Hotel and Resort Bay of Islands, Paihia

Copthorne Hotel & Resort Bay of Islands is located within the Waitangi Treaty grounds, surrounded by native bush and the beautiful Bay of Islands Harbour.

Meals included: Breakfast



## Day 3



### Island Hopper Day Cruise with Barefoot Sailing Adventures - Lunch Included

Come spend a day with the Barefoot Sailing crew for a magical day cruise sailing to a beautiful wildlife sanctuary island. You can enjoy water activities such as snorkeling and paddle boarding and explore hiking trails which are perfect for bird lovers.

This small-group tour is designed to suit the active adventurer but is equally relaxing if you're looking for an easy-going day out. Please take your time to understand the risks associated with this activity here.

### Your accommodation: Copthorne Hotel and Resort Bay of Islands, Paihia

Copthorne Hotel & Resort Bay of Islands is located within the Waitangi Treaty grounds, surrounded by native bush and the beautiful Bay of Islands Harbour.

Meals included: Breakfast



## Day 4



### Paihia, Bay of Islands to Snells Beach via Waipoua

From the Bay of Islands you will head west, leaving the Pacific Ocean for the wilder shores of Hokianga and the Tasman Sea. Small towns Omāpere and Opononi are reminiscent of days gone by with a vintage seaside feel and are the perfect place to stop for an ice cream in a hot day. To the south is the Kauri coast, which you're about to explore. Head south into the Waipoua Forest, home to giant Kauri trees. Allow time for one of a number of short walks available in the area. Not to be missed is the five minute loop to view the largest Kauri in New Zealand, Tane Mahuta. Backtrack cross-country to the Matakōhe Kauri Museum an award winning museum with extensive historical displays. Continue on the road to Snells Beach, a lovely little township close to Warkworth. If you arrive in plenty of time, head into Matakana Wine Country for some great dining options. Another must do while you're here is a day excursion to one of many deserted beaches in the Tawharanui Marine Reserve.

## Manea Footprints of Kupe Guided Tour

Enter Te Hokianga-nui-a-Kupe, our sacred cradle of tribal histories. Walk in the footprints of the Maori ancestor — Kupe the intrepid, Kupe the voyager, Kupe the discoverer.

Experience a Pōwhiri (welcome ceremony) and other rituals and customs experienced through interaction with the descendants of Kupe.

Explore the contemporary cultural centre with carvings and artefacts holding the stories of the past, giving you incredible insight into the history of Aotearoa.

---

## Matakohe Kauri Museum

The Kauri Museum is located approximately 90 minutes drive north of Auckland, in the rural backdrop of Matakohe. Offering insight into the region's pioneering history, it charts the rise and fall of the great Kauri forests with stunning displays and detailed exhibitions including: The largest collection of Kauri Gum in the world, a fully furnished 1900's era Kauri house, the largest collection of Kauri furniture in the world, a huge 22 metre long Kauri slab and a magnificent collection of original photographs and pioneering memorabilia.

---

## Snells Beach

Tucked away on the stunning Matakana Coast, just an hour's drive north of Auckland, Snells Beach is the quintessential Kiwi seaside escape. This long, sandy beach offers a peaceful and family-friendly environment with gentle, clear waters perfect for swimming, paddleboarding, and kayaking.

The calm waters of Kawau Bay provide a picturesque backdrop, and you can enjoy spectacular sunrises over the water. Nearby are the beautiful beaches of Scandrett Regional Park and the boutique vineyards of Matakana, and a little further, you will find the often deserted beaches of the Tawharanui Marine Reserve.

The area is also a haven for art and food lovers, with the renowned Brick Bay Wines & Sculpture Trail just a stone's throw away, where you can stroll through native bush and vineyards while admiring contemporary New Zealand art.

Whether you're looking to relax under a pohutukawa tree, explore the local arts scene, or simply enjoy some fish and chips with a view, Snells Beach is the perfect spot to slow down and embrace the laid-back coastal lifestyle.

---

## Your accommodation: Tahi Lodge

Tahi Lodge is situated at Snells Beach in the picturesque Matakana Coast Wine Country region, only an hour scenic drive north from Auckland and close to many activities and attractions. It is an ideal accommodation choice for relaxing short breaks, holidays with family and friends or celebrating special occasions such as birthdays, weddings or anniversaries.

Meals included: Breakfast



## Day 5



## Snells Beach to Auckland

From Snells Beach return to Warkworth and then south passing through the North Shore Suburbs. Perhaps take a detour to see Tawharanui Regional Park en route or take the scenic drive along the Hibiscus Coast Road.

---

## SUGGESTED ACTIVITY - Sculptureum - Gardens and Galleries Experience

This 90-minute self-guided experience hosts you in a Garden of Creative Diversity with plenty of weird and wonderful art. The tour finishes with the sixth gallery which contains a stunning glass chandelier by American artist, Dale Chihuly. Be sure to indulge at the Rothko Restaurant located on site.

---

## Depart Auckland today

Explore more of vibrant Auckland city before dropping your rental car at the airport depot and continuing your onward journey.

---

## Farewell from Aotearoa-New Zealand

Bid farewell to Aotearoa-New Zealand, taking with you unforgettable memories of its breathtaking landscapes and incredible adventures. In Maori, it is said mā te wā, which is not goodbye, it is see you soon!

---

## Tour details

Departures:	Daily
Tour type:	Self Drive Tour (FTNZ ONLY)
Starts:	Auckland
Finishes:	Auckland
Tour length:	5
Accommodation:	Hotel 4 star
Car/transport type:	

---

## Included activities

Includes	Private airport transfers
----------	---------------------------

---

## Accommodation summary

Day 1	M Social Hotel Auckland
Day 2	Copthorne Hotel and Resort Bay of Islands, Paihia
Day 3	Copthorne Hotel and Resort Bay of Islands, Paihia
Day 4	Tahi Lodge