



## A Taste of the South (Reversed)

This 8 day scenic route will give you a wonderful 'taste' of the South Island's beauty and diversity. Beginning with the world famous Tranz Alpine Scenic Train journey from Christchurch to the West Coast town of Greymouth. From there you will explore the countryside of the West Coast, Otago, Southland, Fiordland and Canterbury. Along the way highlights include the glaciers of the West Coast, adventure in Queenstown, Te Anau the gateway to Fiordland National Park and magnificent Mt Cook National Park. You'll also explore the south's two largest cities of Christchurch and Dunedin.



Starts in: Christchurch  
 Finishes in: Christchurch  
 Length: 8days / 7nights  
 Accommodation: Motels  
 Can be customised: Yes



This itinerary can be customised to suit you perfectly. We can add more days, remove days, change accommodations, mix it up, add activities to suit your interests or simply design and create something from scratch. Call us today to get your custom New Zealand itinerary underway.



### Inclusions:

- Includes: Late model rental cars
- Includes: Fully inclusive rental car insurance (excess may apply)
- Includes: Unlimited kms
- Includes: GPS navigation
- Includes: Airport & ferry terminal rental car fees
- Includes: Additional drivers
- Includes: Comprehensive tour pack (detailed itinerary, driving instructions, map/guidebooks, brochures)
- Includes: 24/7 support while touring New Zealand
- Included activity: Private Transfer Christchurch International Airport to Christchurch Accommodation
- Included activity: Electronic Travel Guide and In-Country Support App
- Included activity: Shared Transfer from Christchurch CBD Accommodation to Christchurch Train Station with Christchurch Touring Company
- Included activity: TranzAlpine Scenic Train: Christchurch to Greymouth



## Day 1



### Private Transfer Christchurch International Airport to Christchurch Accommodation

On arrival, you will be met by a private driver and transferred to your Christchurch accommodation.

---

### Welcome to Christchurch City

Christchurch New Zealand's garden city is steadily being transformed into a vibrant urban destination. Encompassing a large green belt, it is known for its wide tree lined avenues and lush gardens. A great way to explore the city or easy way to see the sights or ride the historic trams across town to the renowned botanic gardens and the unique cardboard Transitional Cathedral, that's right it is built of cardboard!

---

### SUGGESTED ACTIVITY - Discover Christchurch Afternoon Tour

A half-day sightseeing tour of Christchurch highlighting both the damage to the city inflicted by several large earthquakes in 2010 and 2011 and the rebuild which is currently in progress, together with the surviving beauty of the city and the historical landmarks. Experience the grand architecture, beautiful gardens, and scenic viewpoints on a half-day city tour of Christchurch.

---

### Your accommodation: Quest on Cambridge

Quest on Cambridge serviced apartment-style hotel rooms offer guests a relaxed and comfortable Christchurch accommodation experience. Each room has an open-plan living area, a fully equipped kitchen, and natural light. Quest on Cambridge is a short walk from the south shopping centre and to the Botanic Gardens.



## Day 2



### Shared Transfer from Christchurch CBD Accommodation to Christchurch Train Station with Christchurch Touring Company

You will be met by a driver at your Christchurch Accommodation and transferred to the railway station.

---

### TranzAlpine Scenic Train: Christchurch to Greymouth

The early morning departure is rewarded with incredible scenery today onboard the TranzAlpine Scenic Train. Considered one of the world's great train journeys, it travels between the East Coast, Christchurch and the West Coast, Greymouth. From your carriage, you'll see the fields of the Canterbury Plains and farmland, followed by the spectacular gorges and river valleys of the Waimakariri River. The train then climbs into the Southern Alps passing through small settlements and Arthur's Pass National Park before descending through the lush beech rain forest to the West Coast town of Greymouth, a great base for visits to Punakaiki and the West Coast glaciers.

---

### Collect Rental Car

Choose a car to best suit your needs from our fantastic rental car range. From compact economy, hatchbacks to prestige SUVs.

---

### Greymouth to Franz Josef

Leaving Greymouth you will head south into Glacier Country. Pass through Hokitika and be sure to take a 50 minute detour to the spectacular Hokitika Gorge, the famous turquoise-coloured river surrounded by native bush-clad cliffs.

Continue on through Ross, a historic gold mining town where several buildings still remain intact and still to this day one of New Zealand's working gold mines. As you travel further down the coast you'll also go through Hari Hari, the town where Guy Menzies, the first person to fly solo over the Tasman crash landed. Heading south along the mighty West Coast highway you pass through ancient temperate rainforests while getting sneak peeks of the wild west coast beach occasionally. Whataroa is the next town where you can see one of the world's rarest birds, the New Zealand white heron or Kotuku nest at the Waitangi Roto Nature Reserve, and guided tours from October to March will take you there. Arriving in Franz Josef township is a lively place with a great atmosphere, restaurants including Blue Ice and Snakebite are worth a meal. This small town is packed with walks, adventure, and scenic activities, something for everyone.

---

## SUGGESTED ACTIVITY - Mountain Scenic Spectacular Flight with The Helicopter Line

The premier flight! Experience two of New Zealand's finest national parks and encounter the gigantic expanse of both the Franz Josef and Fox Glaciers. Take in the towering ice formations and top it off with a snow landing and the chance to set foot on snow and breath the clean alpine air. Along the way, get to see the Tasman Glacier and get close to Mount Cook, New Zealand's highest peak. Duration of helicopter flight is 40 minutes.

---

### Your accommodation: Punga Grove Motel & Suites

Punga Grove is right in the heart of Franz Josef Glacier village stylish accommodation in a beautiful rainforest setting.



---

## Day 3



### Franz Josef to Queenstown (via Wānaka)

Heading south you pass through the second glacier town of Fox Glacier before heading along the coast and into more classic West Coast bush scenery. We can recommend a stop at Knights Point Lookout elephant seals can often be seen basking on the sandy beaches at the far end of the point. Crossing the massive Haast River you turn inland and head into the valley climbing through mountains littered with waterfalls. The Haast Valley offers a spectacular view of the river and its enormous power. Along the way there is ample opportunity to admire Aspiring National Park and a stop at Roarig Billy Falls will leave you in awe. The Blue Pools near Makarora are a great 30-minute walk. The road from Makarora leads to Lakes Wānaka and Hāwea which will guide you into the stunning lakeside township of Wānaka before heading over New Zealand's highest sealed road, Crown Range Road and dropping into the Wakatipu basin, home to Queenstown. .

---

### SUGGESTED ACTIVITY - Shotover Jet Canyon Jet Boat Ride

Shotover Jet is the only company permitted to operate in the Shotover River Canyons. It's a thrilling ride! Skim past rocky outcrops at close range in your Shotover Jet 'Big Red', as you twist and turn through the narrow canyons at breathtaking speeds. And a major highlight - hold tight for the world-famous Shotover Jet full 360-degree spins!

---

### SUGGESTED ACTIVITY - TSS Earnslaw Cruise and Walter Peak Gourmet BBQ Dinner

Enjoy a quintessential Kiwi experience, a delicious gourmet BBQ buffet meal, and a farm demonstration in a stunning lakeside setting. Take in the stunning views of Lake Wakatipu and its surroundings as you cruise across the lake to the historic Walter Peak high country farm aboard the TSS Earnslaw Steamship. Enjoy the ambiance of the heart of the stately homestead while your Colonel's Homestead Restaurant chef prepares a gourmet BBQ dinner. Your seasonal menu includes an extensive selection of local New Zealand produce, including succulent meats and a selection of delicious vegetables and salads. Complete your meal with your choice of delicious desserts, or New Zealand cheeses. After dinner, watch the farm dogs in action with a sheep-herding demonstration and say hello to the other farm animals. Finally, cruise home under the southern stars and enjoy the fresh night air as the lights of Queenstown draw ever closer.

---

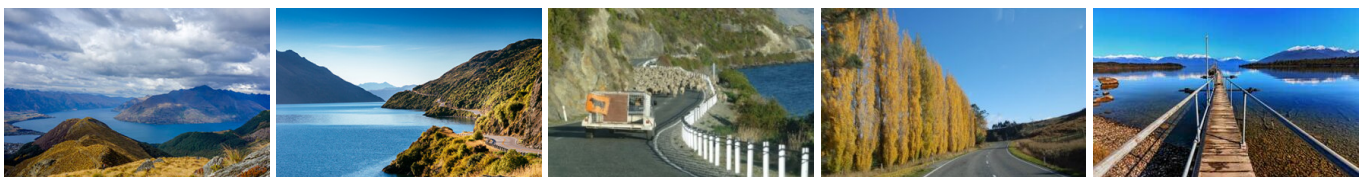
### Your accommodation: Scenic Suites Queenstown

Scenic Suites Queenstown offers guests exquisite style, comfort and spectacular views over Lake Wakatipu and the Southern Alps. The hotel prides itself on its 4-star hospitality that will make your stay in Queenstown even more memorable.



---

## Day 4



## Queenstown to Te Anau

Passing through the bustling suburb of Frankton, follow the shores of Lake Wakatipu. The Remarkables mountain range towers over you on the stretch of road known as "The Devil's Staircase" leading you to the township of Kingston. You'll venture into Southland before crossing the rolling tussock lands of Mossburn (deer capital of New Zealand) and shortly arriving at Te Anau, the gateway to Fiordland National Park.

---

### SUGGESTED ACTIVITY - Te Anau Glowworm Caves with RealNZ

Begin your Te Anau Glowworm experience with a scenic cruise across Lake Te Anau on board the luxury catamaran, Luminosa, to the western side of the lake. On arrival, you'll enter the caves through Cavern House, where informative displays detail the history of this 12,000 year old underground network. You'll then explore by limestone pathway while your guide points out hidden whirlpools, sculpted rock formations, and a rushing underground waterfall. See a magical display of thousands of glowworms as you glide through the darkness in a small boat.

---

### Your accommodation: Lakefront Lodge

Stylish self-contained motel units less than a minute walk from Te Anau Lakefront. Enjoy a close walk to shops, cafes and restaurants.



---

## Day 5



### Te Anau to Dunedin

The drive from Te Anau to Dunedin takes you through classic Southland farmland scenery to Gore, the official home of country music in New Zealand. Continuing onward to the East Coast you'll pass through small farming communities and then on to State Highway 1. Balclutha is the next landmark town and gateway to the seaside community of The Catlins. From here it is a short drive through to Dunedin, known in Māori as Ōtepoti and known worldwide as "Edinburgh of the South".

---

### SUGGESTED ACTIVITY - Monarch Wildlife Cruise from Wellers Rock

An unforgettable experience viewing rare and fascinating wildlife. Board the Monarch Boat and take in the fascinating sight of the Northern Royal Albatross as it comes into nest on the spectacular cliffs of Taiaroa, Otago Peninsula. You'll also see eight other species of birds including sooty shearwaters and petrels as well as sea lions and fur seals and if you're lucky dolphins and whales.

---

### Your accommodation: Motel on York

Motel on York is located in the heart of Dunedin city. The property offers superior accommodation only 300 metres away from cafes and restaurants.



---

## Day 6



### Dunedin to Mt Cook National Park

Heading north from Dunedin your first stop should be Moeraki to explore the famous and unique boulders strewn on the beach. Before heading inland along the Waitaki Valley you pass through the historic township of Oamaru and its Stone buildings. Take time to head into the old quarter and if your timing is right you may get to see some of the local resident little blue penguins. The Waitaki Valley makes a large contribution to New Zealand's electricity supply with its 3 hydro dams. Arriving into Omarama you are now truly in the high country but don't think these vast empty lands are useless, these are some of the country's most productive merino sheep stations. The turquoise waters of Lake Pukaki guide you the final 45 minutes to Aoraki Mount Cook Village

## SUGGESTED ACTIVITY - Glacier Explorers

Experience 500-year-old icebergs up close on the Aoraki-Mt Cook terminal lake. The Glacier Explorers tour is the only one of its kind in New Zealand and one of only three in the world! Very few glaciers terminate into lakes and even fewer of them are accessible. See towering ice cliffs and floating icebergs from the safety of a specially designed boat. These boats provide a safe way to view unseen and inaccessible areas of New Zealand's largest glacier The Tasman.

---

### Your accommodation: Mt Cook Motel

Mt Cook Motel, nestled in the heart of Mt. Cook Village, offers spacious self-contained units that provide comfort and convenience. Each unit is surrounded by breathtaking alpine mountain views, making it the perfect retreat for nature lovers and adventurers alike.



## Day 7



### Aoraki-Mt Cook National Park to Christchurch

Leaving Aoraki Mt Cook National Park, travel a short distance for a stop at the visitor centre on the southern shores of Lake Pukaki. Learn about the formation of the region and take in the spectacular views of Aoraki-Mount Cook. Along the way you'll come to Lake Tekapo which also displays the same reflective qualities as Lake Pukaki, making the waters bright turquoise. It's a great place to take a scenic flight, soak in a hot spring or just marvel at the magnificent views. From here you travel through Burkes Pass and into the rich farming valley that surrounds Geraldine. Continue across the vast Canterbury Plains to Christchurch.

---

### Your accommodation: Quest on Cambridge

Quest on Cambridge serviced apartment-style hotel rooms offer guests a relaxed and comfortable Christchurch accommodation experience. Each room has an open-plan living area, a fully equipped kitchen, and natural light. Quest on Cambridge is a short walk from the south shopping centre and to the Botanic Gardens.



## Day 8



### Return Your Vehicle to Christchurch Airport

It's time to return your rental car and let the South Island journey come to an end. If time allows spend the day exploring more of Christchurch, we'd suggest a leisurely drive up the Port Hills for some great sites and then over to the harbour of Lyttleton, before circling through the tunnel and back to the airport to continue your journey home.&nbsp;

---

### Farewell from Aotearoa-New Zealand

Bid farewell to New Zealand, taking with you unforgettable memories of its breathtaking landscapes and incredible adventures. In Maori, it is said mā te wā, which is not goodbye, it is see you soon!

---

## Tour details

Departures:	Daily
Tour type:	South Island Self Drive
Starts:	Christchurch
Finishes:	Christchurch
Tour length:	8
Accommodation:	Motels
Car/transport type:	

---

## Included activities

Includes	Private airport transfers
Includes	Private train station transfers
Includes	TranzAlpine Train from Christchurch to Greymouth

---

## Accommodation summary

Day 1	Quest on Cambridge
Day 2	Punga Grove Motel & Suites
Day 3	Scenic Suites Queenstown
Day 4	Lakefront Lodge
Day 5	Motel on York
Day 6	Mt Cook Motel
Day 7	Quest on Cambridge