

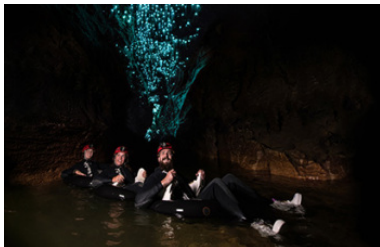


## South Island Wilderness Encounters Tour

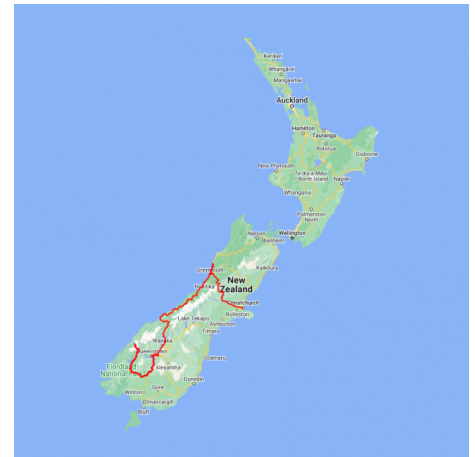
This 14 day tour explores the best of the South Island's walks and adventures. After crossing the Southern Alps on board the TranzAlpine Scenic Train your journey north to the remarkable Pancake Rocks at Punakaiki where you explore Paparoa National Park. From there you head south for two of the most scenic road trips in the world, the Milford Road and the West Coast Road. You'll also walk sections of the Milford Track and Routeburn Track. Be sure to have your camera ready for the spectacular wilderness you'll encounter.



Starts in: Christchurch  
 Finishes in: Queenstown  
 Length: 14days / 13nights  
 Accommodation: Hotel 4 star  
 Can be customised: Yes



This itinerary can be customised to suit you perfectly. We can add more days, remove days, change accommodations, mix it up, add activities to suit your interests or simply design and create something from scratch. Call us today to get your custom New Zealand itinerary underway.



### Inclusions:

Includes: Late model rental cars  
 Includes: Unlimited kms  
 Includes: Airport & ferry terminal rental car fees  
 Includes: Comprehensive tour pack (detailed itinerary, driving instructions, map/guidebooks, brochures)  
 Included activity: Private transfer Christchurch International Airport to your accommodation  
 Included activity: Ata Whenua - Shadowland Film at Fiordland Cinema  
 Included activity: Te Anau Glowworm Caves with RealNZ  
 Included activity: Private transfer accommodation to Christchurch Train Station with Christchurch Touring  
 Included activity: Underworld Rafting and Glowworm Experience with Underworld Adventures  
 Included activity: Franz Josef Glacier Helihike  
 Included activity: Epic Duo - Clay Target & Jet Sprint Boat

Includes: Fully inclusive rental car insurance (excess may apply)  
 Includes: GPS navigation  
 Includes: Additional drivers  
 Includes: 24/7 support while touring New Zealand  
 Included activity: Electronic Travel Guide and In-Country Support App  
 Included activity: Pure Wilderness Jet Boat  
 Included activity: Milford Mariner Overnight Cruise  
 Included activity: TranzAlpine Scenic Train: Christchurch to Greymouth  
 Included activity: Okarito Lagoon Guided Kayak Trip (2 hours)  
 Included activity: Lake Cruise and Island Nature Walk with Eco Wanaka  
 : 13 breakfasts, 1 dinner



## Day 1



### Private transfer Christchurch International Airport to your accommodation

On arrival, you will be met by a private driver and transferred to your Christchurch accommodation.

---

### Welcome to Christchurch City

Christchurch New Zealand's garden city is steadily being transformed into a vibrant urban destination. Encompassing a large green belt, it is known for its wide tree lined avenues and lush gardens. A great way to explore the city or easy way to see the sights or ride the historic trams across town to the renowned botanic gardens and the unique cardboard Transitional Cathedral, that's right it is built of cardboard!

---

### Christchurch

The largest metro area in the South Island, Christchurch is referred to as New Zealand's Garden City. Home to one of the biggest public parks in the country, Christchurch is also known as the gateway to the South Island. Boasting a plethora of activities both inside and outside the town centre, there is something here to suit every visitor.

One such attraction is the International Antarctic Centre, located at the International Airport. From here the bases in Antarctica are replenished and there are unique displays of what life is like in this chilly environment - including native little blue penguins.

You could also wish to visit Quake City for insight into the devastating Christchurch earthquakes of 2010 and 2011, then take in the sights on a city tour. Drive an hour in any direction to ski, mountain bike, wine taste, whale-watch, bungee jump or play golf. Explore the French settlement of Akaroa, tucked inside Banks Peninsula. An eclectic mix of British and French architecture, this seaside town has a whimsical charm and is the perfect place to escape.

---

### Your accommodation: Heritage Christchurch

The Heritage Christchurch Hotel offers contemporary accommodation in the lovingly and safely restored Old Government Building. It is sited in a great location on Cathedral Square.



## Day 2



### Private transfer accommodation to Christchurch Train Station with Christchurch Touring

A private driver will collect you from your accommodation and transfer you to the Christchurch train station in time for your train journey.

---

### TranzAlpine Scenic Train Christchurch to Greymouth

Your early morning departure is rewarded with incredible scenery today onboard the TranzAlpine Scenic Train, considered one of the world's great train journeys. It travels between Christchurch and Greymouth, from one coast of New Zealand to the other. From your carriage you'll see the fields of the Canterbury Plains and farmland, followed by the spectacular gorges and river valleys of the Waimakariri River. Your train then climbs into the Southern Alps before descending through the lush beech rain forest to the West Coast town of Greymouth, a great base for visits to Punakaiki and the West Coast glaciers.

---

### Collect your rental car

This tour can be priced with any of the rental cars available in our fantastic range, from economy hatchbacks to prestige saloons and SUV's.

---

## Greymouth to Punakaiki

The short drive north to Punakaiki takes you along the wonderful west coast with ample opportunity to view the surf and the steep bush clad mountains. Punakaiki is most famous for the Pancake Rocks and Blowholes. Visitors are often less aware of the great many other experiences available. Located in the heart of the Paparoa National Park, the area offers guided beach, forest and mountain walks, canoeing, wildlife, horse trekking, surfing, gemstone hunting, caving and climbing, heritage sites. There are taverns, cafes and restaurants, and a great range of accommodation. The area also boasts a vibrant arts and crafts community and a cooperative gallery.

---

### Your accommodation: Scenic Hotel Punakaiki

Scenic Hotel Punakaiki is a modern, award-winning hotel complex, architecturally designed to harmonious with the local environment. Nestled in the foothills of Paparoa National Park the resort has spectacular views of the Wild West Coast beaches while all rooms have rainforest and/or ocean views.

Meals included: Breakfast



## Day 3



### Pancake Rocks

The Pancake Rocks are a very popular tourist destination at Dolomite Point south of the main village. The Pancake Rocks are a heavily eroded limestone area where the sea bursts through several vertical blowholes during high tides. Together with the 'pancake'-layering of the limestone (created by immense pressure on alternating hard and soft layers of marine creatures and plant sediments), these form the main attraction of the area.

The Pancake Rocks are presently explorable by several walkways winding through the rock formations, some are pathways, and others are carved into stairways up and down the rock faces. &nbsp;&nbsp;&nbsp;State Highway 6, the only through road on the West Coast, passes through the town.

---

### Underworld Rafting and Glowworm Experience with Underworld Adventures

A superb four hour Black Water Rafting adventure in the Paparoa National Park. You meander through a paradise of stalactites and stalagmites in the upper dry levels of the cave. You then enter a slow moving underground river on which you float in your tube using only the natural light of an awe inspiring display of glow worms for navigation. Emerge from the cave into a remote and untouched world before leaving its tranquility for the rushing bubbling waters of the low grade Nile River Rapids. It is important you understand the risks associated with this activity. For more information please see here.

---

### Paparoa National Park

Paparoa National Park on the South Island's West Coast is most famous for its sculpted limestone cliffs including the Pancake Rocks and blowholes at Dolomite Point. &nbsp;&nbsp;&nbsp;The best place to base yourself for exploring the park is the small village of Punakaiki. The limestone base of the park makes this a spectacular destination, with karst limestone formations scattered amongst lush green forests and carved out river canyons. &nbsp;&nbsp;&nbsp;There are a number of opportunities for the unguided day tripper to safely experience the subterranean cave systems. &nbsp;&nbsp;&nbsp;The oldest tourist destination in the park is the Fox River Cave Walk, a safe cave walk with 200m of an underground network to explore, or visit the Punakaiki cavern located right beside State Highway 6 &ndash; just remember to bring a good flashlight. To really understand the flora and fauna of the park, make sure to stop and visit the caves and rivers , or for a more adventurous experience, black water rafting with Underworld Adventures. &nbsp;&nbsp;&nbsp;For more information on walks and caves in Paparoa National Park visit the Department of Conservation website.

---

### Your accommodation: Scenic Hotel Punakaiki

Scenic Hotel Punakaiki is a modern, award-winning hotel complex, architecturally designed to harmonious with the local environment. Nestled in the foothills of Paparoa National Park the resort has spectacular views of the Wild West Coast beaches while all rooms have rainforest and/or ocean views.

Meals included: Breakfast





## Day 4



### Punakaiki to Franz Josef Glacier

The drive South on State Highway 6 takes you through many West Coast towns. The first is Greymouth, the commercial centre for the West Coast. Just south of the town is Shantytown a replica gold rush town with lots of great displays from yesteryear. The next town is Hokitika and this is a great place to explore the craft and gift stores. The Jade or Greenstone on offer in Hokitika is probably some of the best you will see in the country. The Hokitika Gorge, off the beaten track and inland a little is a spectacular detour. Turquoise waters flowing through a narrow gorge. A great short walk will deliver you to this piece of paradise. Ross is the site of an old gold mining town and some of the old buildings and workings remain. In fact Ross is still home to one of the few working gold mines left in New Zealand and the local information centre offers you the chance to pan for gold. Continuing south Hari Hari is the township that Guy Menzies decided to land in (or rather crash land) as he became the first person to fly solo across the Tasman. Whataroa, a small township on the main road is where you would head off to see one of the worlds rarest birds. The entire population (somewhere between 150 and 200 birds) of the New Zealand white heron or kotuku nest at the Waitangi Roto Nature Reserve and guided tours from October to March will take you there. Arriving in to the Glacier region you catch your first glimpse of Franz Josef Glacier from a few kilometres out as it flows from the Southern Alps. Franz Josef township is a lively place with a great atmosphere, plenty of choice to dine out and some wonderful activities to enjoy.

### Franz Josef

Franz Josef, named after both the local village and the nearby glacier, holds special significance in Māori culture as "Ko Roimata o Hine Hukatere" – The Tears of the Ice Maiden. This rare glacier is one of only three in the world that descends from alpine heights into a temperate rainforest, almost reaching sea level. New Zealand is home to two of these unique glaciers, Franz Josef and Fox Glacier, both highly accessible and popular with visitors. The best ways to experience the glacier are through scenic flights or, for the adventurous, a heli-hike. You can also enjoy glacier views with a short drive from the village and walking tracks. Beyond the glacier, Franz Josef offers a wealth of adventure activities and beautiful forest and alpine walks, making it a must-visit destination.

### Okarito Lagoon Guided Kayak Trip

Kayaking is by far the best way to enjoy the flora, fauna and scenic grandeur of New Zealand's largest unmodified coastal wetland. Previous experience is not necessary. Okarito Lagoon covers more than 3240 hectares of shallow open water and is well known for its outstanding bird life, including white heron and royal spoonbill. Exploring the open water and river channels that lead you deep into the heart of the rainforest is like stepping back in time to pre-European conditions and on a clear day you enjoy fantastic views of Mt. Cook and the Southern Alps. Your guide will take you to their favourite spots where you'll discover the flora, fauna and history of the lagoon.

### Your accommodation: Scenic Hotel Franz Josef Glacier

Only a breath away from the Franz Josef Glacier, Scenic Hotel is located in the heart of Franz Josef Village. Here you will find all of the amenities you would expect, as well as being close to the shops, restaurants and activities on offer in the beautiful Westland region.

Meals included: Breakfast



## Day 5



### Explore Franz Josef

Franz Josef is a small but lively town in the heart of the West Coast, known for its 12 km long glacier. Surrounded by lush rainforest-clad mountains the township has a vibrant and bustling atmosphere. To see the ice from a viewpoint you can walk along the valley floor to the viewpoint below the terminal face. However, to go on the glacier itself you must take a licensed helicopter tour.

## Franz Josef Glacier Helihike

After a thrilling scenic flight, high above the rugged terrain, you will land on the glacier, ready to undertake a 2.15 hour guided glacier hike. Your friendly guide will lead you through some of the most pristine and awe-inspiring glacial scenery in the world. Your guide will choose your route carefully as you go and, with an eye for the most spectacular ice formations, you'll soon be making your way through an extraordinary landscape of towering peaks and glistening blue ice. It is important you read and understand the risks associated with this activity prior to travel. For more information please see here.

---

## SUGGESTED ACTIVITY - One Hour Private Tub with Waiho Hot Tubs

Relax and unwind in the soothing comfort of fresh, warm water and aromatic wood smoke. Enjoy your own private tubs, nestled in a lush rainforest setting on New Zealand's West Coast. These wood-fired hot tubs combine the soothing comfort of warm water with the unique atmosphere of wood smoke to give you an unforgettable experience.

---

## Your accommodation: Scenic Hotel Franz Josef Glacier

Only a breath away from the Franz Josef Glacier, Scenic Hotel is located in the heart of Franz Josef Village. Here you will find all of the amenities you would expect, as well as being close to the shops, restaurants and activities on offer in the beautiful Westland region.

Meals included: Breakfast



---

## Day 6



### Franz Josef to Wanaka

Heading south you will climb over the Fox hills before arriving at the small town of Fox Glacier. If it's a nice day enjoy spectacular reflections of snowcapped mountains in Lake Matheson, located just 5 minutes west of Fox. Heading south from fox enjoy the amazing scenery of the Southern Alps, and sneak peeks of the rugged beaches while winding through ancient temperate rainforests. Paringa Salmon Farm is worth a stop to stretch your legs, feed the fish, and stop for lunch and refreshments. At Knights Point Lookout, elephant seals can often be seen basking on the sandy beaches at the far end of the point. Crossing the Haast River you'll turn inland and through the mountainous valley littered with waterfalls. A great suggested stop along this route is the Blue Pools. Continue on past lakes Hawea and Wanaka into the alpine township of Wanaka.

---

## Wanaka

The alpine village of Wanaka sits on the shores of the third largest lake in the Queenstown Lakes District and is surrounded by the southern alps. Wanaka draws those seeking adventure, spectacular scenery and a relaxed atmosphere. During winter the town's population more than triples as snow sports enthusiasts flock to the local ski fields of Treble Cone and Cardrona. Known as the gateway to the Mt Aspiring National Park, Wanaka is a walker's paradise of remote wilderness, high mountains and beautiful river valleys. For those seeking an adrenaline rush try skydiving, rock-climbing, jet boating or choose a scenic flight over Wanaka in a historic Tiger Moth aeroplane.

---

## Your accommodation: Edgewater

Edgewater is Wanaka's leading hotel located right on the edge of Lake Wanaka. A short stroll to the town centres shops, cafes and restaurants and close to many walking trails the resort is ideal to explore this wonderful Alpine setting.

Meals included: Breakfast



---

## Day 7



## Lake Cruise and Island Nature Walk with Eco Wanaka

Lying close to the centre of Lake Wanaka is Mou Waho Island Nature Reserve. A unique glacial remnant of the last ice age, the island is also the historic site of early shipbuilding and used to be a stopping place for the steamers and log rafts that once plied the lake. Accessible from Wanaka by a 35-minute boat cruise, the landing is on the eastern side of the island where the remnants of the early settlement remain; a stone wharf and a hut. A well-formed track leads from the landing and climbs steadily through native bush to near the top of Tyrwhitt Peak. Just before the top, we see Arethusa Pool, a small lake on the island with small islands in it - very intriguing! From the top, we have a sweeping 360-degree view of Lake Wanaka, its surrounding mountains and valleys, and below Arethusa Pool. The perfect spot to stop for tea or coffee. Going back down the track gives us more time to take in our surroundings, listening to and watching the lively bird-life, and just enjoying this unique wildlife reserve. You will feel well rewarded as you re-join the boat for the cruise back to Wanaka. Total cruise time is 1.5 hours. The trip runs subject to weather and lake conditions. Depending on the planting season, you can help The Reforestation of Mou Waho by planting a tree.

---

## Wanaka to Queenstown

Leaving Wanaka, you head over New Zealand's highest sealed road, Crown Range Road, before dropping into Queenstown. This drive only takes about an hour, but you should allow more time to enjoy the magnificent scenery and explore the walks and many stops en route, including the Cardrona Distillery, wonderful views from Crown Range's highest point over Queenstown, the picturesque town of Arrowtown, and if time allows, even the wineries in Gibbston.

---

## Queenstown

Known as the adventure capital of the world, Queenstown is home to many adrenaline-inducing activities. Nestled on the shores of Lake Wakatipu, this alpine town is surrounded by towering mountains. Each of the seasons has its own special vibe, and most adrenaline-filled activities can be accessed year-round. Queenstown is home to jet boating, bungy jumping, rafting, skydiving, paragliding, and even indoor thrills. If you want that rush - head out on the Shotover Jet, dive off the Nevis Bungy, freefall on the Canyon Swing, or Zip line the Gondola. While arguably the brightest gem in New Zealand's crown, Queenstown offers far more than an action-packed getaway. If you're looking for a slightly slower pace, there are plenty of recreational activities, including hiking and biking trails to explore, guided tours, boat cruises, scenic flights, or spa and wellness options to help you get away. Head to the lakefront, eat at one of the al fresco eateries, and soak up the local vibes; catch a ride on the iconic 100-year-old steamship the TSS Earnslaw; or take the Skyline Gondola and enjoy bird's-eye views of the Remarkables mountain ranges and Lake Wakatipu. Pack a picnic and go for a hike, only 20 minutes from Central Queenstown, Coronet Peak opens for summer sightseeing. You can ride the Peak Gondola to the top for panoramic views and hike the trails, or go for a bike ride on many excellent biking trails. In winter, Queenstown becomes a world-class winter resort, with four ski areas and a range of activities, bars, restaurants, and ways to relax and unwind. A must-visit spot in Queenstown, Fergburger is famous for its mouthwatering gourmet burgers. Expect long queues, but the wait is definitely worth it for their delicious and generously sized burgers. Located on the waterfront, Botswana Butchery offers a sophisticated dining experience with a focus on premium meats and seafood. Enjoy stunning views of Lake Wakatipu while indulging in their expertly crafted dishes. If you're looking for something quick and tasty, stop by Fergbaker, an extension of Fergburger. Indulge in their delectable selection of pies, pastries, and sweet treats, perfect for a snack on the go. Mrs Ferg Gelateria is a great spot to sample some delicious homemade gelato.

---

## SUGGESTED ACTIVITY - Gondola and Buffet Dinner with Skyline Queenstown

With breathtaking views across Queenstown and Lake Wakatipu, the Skyline Complex is a must-do. Catch the fully enclosed gondola to the summit for a remarkable panorama of the city surrounds. Wander the outdoor viewing decks then enjoy a gourmet buffet meal in the Stratosphere Restaurant.

---

## Your accommodation: Millennium Hotel Queenstown

Right in the heart of the action, the Millennium Hotel is just minutes from Queenstown's central shopping and entertainment district. Outdoor activities such as bungy jumping, white water rafting and jet boating are just some of the easily accessible activities nearby in New Zealand's adventure capital.

Meals included: Breakfast



## Day 8





## Explore Queenstown

Well-known as New Zealand's 'adventure capital', Queenstown is home to a range of adventures, from the world's first and most famous bungy jumps to jet boat thrills, white-water rafting, and skydiving. However, Queenstown offers far more than a fast-paced, action-packed holiday. Settled on the shores of beautiful Lake Wakatipu beneath a soaring panorama of the Remarkables Mountain Range, this alpine town is surrounded by many historic, gastronomic, and scenic wonders. Take a stroll through the beautiful lakefront parks and gardens, browse through market stalls on weekends, dine in wonderful al-fresco restaurants, or ride on the 100-year-old historic Steamship - TSS Earnslaw to Walter Peak Station. Take the Queenstown Gondola up to Bob's Peak and soak up the panoramic views of the magnificent lake and mountain ranges. And after all of that, if you do want the adrenaline rush, Queenstown is known for taking your pick from the Shotover Jet, Canyon Swing, Zipline, Luge, or Heli-hike.

---

### SUGGESTED ACTIVITY - Nomad Safaris Macetown 4WD Adventure Tour

A true four-wheel drive, off-road adventure exploring the abandoned gold mining settlement of Macetown. Follow the miners' old wagon trail and explore the historic gold mining town. Long since abandoned after the gold rush, Macetown has now been transformed into a Department of Conservation reserve. Experience the narrow, rugged road and learn about the tumultuous history of the region as you take in the town remnants and spectacular scenery. It is important you read and understand the risks associated with this activity. For more information see here.

---

### SUGGESTED ACTIVITY - TSS Earnslaw cruise to Walter Peak including gourmet BBQ Lunch and a farm tour

Enjoy a quintessential Kiwi experience a delicious barbeque lunch and a farm tour in a stunning lakeside setting. First, take a scenic cruise from Queenstown to Walter Peak High Country Farm on board the vintage steamship TSS Earnslaw, one of the last remaining fully functional coal-fired passenger ships in the southern hemisphere. Disembark and take in the picturesque shores of the Station. Relax on the lakeside terrace at the Colonel's Homestead Restaurant and savour the aromas of the best local produce being cooked on the grill. The seasonal menu has plenty to choose from salads, vegetables and succulent meat. If you're vegetarian, you will be well catered for also. Finish your meal with a scrumptious dessert before joining an entertaining farm demonstration or exploring the beautiful lakeside gardens.

---

### SUGGESTED ACTIVITY - Ride to Paradise - Glenorchy E-bike Guided Tour with Ride to the Sky

Embark on a leisurely e-bike self-guided journey to discover the hidden treasures of Glenorchy. The untamed beauty of the backcountry landscape beckoned countless creative souls a century ago. The surreal vistas in every direction inspire you to paint, or capture them in photographs - anything to preserve this image in your memory. The enchanting wilderness in this corner of the Otago region exudes magic and mystery. It's no surprise that many renowned films like Lord of the Rings and Mission Impossible selected this scenery for their breathtaking scenes.

---

### Your accommodation: Millennium Hotel Queenstown

Right in the heart of the action, the Millennium Hotel is just minutes from Queenstown's central shopping and entertainment district. Outdoor activities such as bungy jumping, white water rafting and jet boating are just some of the easily accessible activities nearby in New Zealand's adventure capital.

Meals included: Breakfast



---

## Day 9



### Queenstown to Gibbston

Following Lake Wakatipu head towards Frankton, crossing the iconic Shotover River. Pass Lake Hayes and follow the Kawarau River as it winds through the landscape to reach your destination, Gibbston. Also known as the 'Valley of the Vines' Gibbston is home to popular vineyards, cellar doors and restaurants.

---

## Gibbston

To the east of Queenstown, tucked inside the Kawarau Gorge is the Gibbston. Stretching to Lake Hayes in Arrowtown, Gibbston is known for its wineries.

Bordering the road on both sides the land is extensively planted with grapes, and there are many opportunities to taste the pinot noir, a variety the region is famous for. Some of its notable wineries include Peregrine, Chard Farm, Gibbston Valley and Two Paddocks.

An ideal spot for lunch is Amisfield Winery and Bistro (a must for any foodie) located at Lake Hayes, just a 10 minute drive from central Queenstown, or, for a more family-friendly option there is the Fume restaurant at Gibbston Valley Wines.

The Gibbston isn't just about wine, opposite Chard Farm is the Kawarau Suspension Bridge built in 1880 to provide access to the goldfields in the region. 108 years later it became the location of the world's first commercial bungy jumping operation and you can still take the 43 metre leap today.

---

## Epic Duo - Clay Target & Jet Sprint Boat

With a mix of skill and speed, this combo is for you to have the chance to Shoot over to the Oxbow Gun Club and show off your skills in the Clay Target Shooting range before taking a ride on our custom-built Jet Sprint Boat, where you'll clock 0 - 100 in just 2.5 seconds!

---

## Gibbston Valley to Queenstown

Leaving the Gibbston you will head towards Queenstown on State Highway 6, this will take you past the Kawarau Bridge Bungy centre, over the Shotover River and into Queenstown. One optional detour worth considering is a visit to historic Arrowtown en-route, a great place to stop for a bite to eat.

---

## SUGGESTED ACTIVITY - Gibbston Valley Wine Cave Tour

Gibbston Valley Winery is home of New Zealand's largest wine cave. They offer daily wine cave and tasting tours to the region's oldest vineyard - their very own Home Block. You will experience wine tasting in the wine cave and catch a glimpse of the winemakers in action. The tour includes a tasting of three varietals in the cave and a visit to the Home Block Vineyard, originally planted by the founder and wine pioneer Allan Brady in 1983.

---

## Your accommodation: Millennium Hotel Queenstown

Right in the heart of the action, the Millennium Hotel is just minutes from Queenstown's central shopping and entertainment district. Outdoor activities such as bungy jumping, white water rafting and jet boating are just some of the easily accessible activities nearby in New Zealand's adventure capital.

Meals included: Breakfast



---

## Day 10



## Queenstown to Te Anau

Following the shores of Lake Wakatipu, The Remarkables mountain range towers over you as you approach the township of Kingston. You'll venture into Southland before crossing the rolling tussock lands of Mossburn (deer capital of New Zealand) and shortly arriving at Te Anau, the gateway to Fiordland National Park.

---

## Te Anau

It is the gateway to Fiordland National Park and a perfect base to visit Milford Sound. The Milford Road originates here, and this is arguably one of the most scenic stretches of highway in the country. Te Anau sits on the shores of spectacular Lake Te Anau, which reaches depths of 417 metres. Te Anau Township is the starting point for many walking tracks, including two of New Zealand's Great Walks, the Milford track and the Kepler track. Apart from hiking, you could go kayaking, lake cruising, fishing, or exploring Te Anau Glowworm Caves. You could go for a bike ride alongside the lake towards Lake Manapouri, on a popular Lake to Lake biking route. Along the way, you will pass a bird sanctuary specialising in Takahē, and other native birds.

---

## Ata Whenua - Shadowland Film at Fiordland Cinema

This breathtaking 'Fiordland On Film - Ata Whenua' will take you on an unforgettable journey through one of the most awe-inspiring landscapes on earth. Shot by award-winning cinematographers with outstanding musical composition, this is the next best thing to a scenic flight over this spectacular wilderness.

---



### Your accommodation: Distinction Luxmore Hotel

The perfect base for all your Fiordland travel, Distinction Luxmore Hotel provides comfortable accommodation right in the heart of Te Anau.

Meals included: Breakfast



---

## Day 11



### SUGGESTED ACTIVITY - Doubtful Sound Sea Plane Flight

Running short of time? This is the perfect way to experience Doubtful Sound. Fly over Lake Manapouri and the South Fiord of Lake Te Anau to the remote wilderness of Doubtful Sound. See stunning waterfalls and unspoilt scenery which will leave you in awe of this dramatic region. This flight takes you to a remote area of the South Islands' rugged West Coast. Sometimes called the Sound of Silence, there is a cloistered serenity within Doubtful Sound that is a contrast with its near neighbour, Milford Sound. At 421 metres deep Doubtful is the deepest of the fiords and is long and winding with three distinct arms. The distance from Deep Cove to the open sea is around 40.4 kilometres. It is also home to New Zealand's highest waterfall - the Browne Falls at 836m (2,742 ft).

---

### Pure Wilderness Jet Boat

Jet boat down the Waiau river, across Lake Manapouri, to the ancient forest of the Fiordland National Park. Enjoy the thrill of jet boating down the majestic trout-filled Waiau River, to the serene Lake Manapouri. Step foot into the Fiordland National Park and go for a short walk while learning about the ancient beech forest and ferns. Your jet boat ride includes a number of stops at the exact locations of the filming the "Fellowship of the Ring" on the Waiau or Anduin River, where the driver will tell you the inside story of the filming the Lord of the Rings on this river. The trip will also include some thrilling 360 degree turns and spins as well as interesting interpretation about the flora and fauna and the local European and Maori history.

---

### Te Anau Glowworm Caves with RealNZ

Begin your Te Anau Glowworm experience with a scenic cruise across Lake Te Anau on board the luxury catamaran, Luminosa, to the western side of the lake. On arrival, you'll enter the caves through Cavern House, where informative displays detail the history of this 12,000 year old underground network.

You'll then explore by limestone pathway while your guide points out hidden whirlpools, sculpted rock formations and a rushing underground waterfall. See a magical display of thousands of glowworms as you glide through the darkness in a small boat.

---

### Your accommodation: Distinction Luxmore Hotel

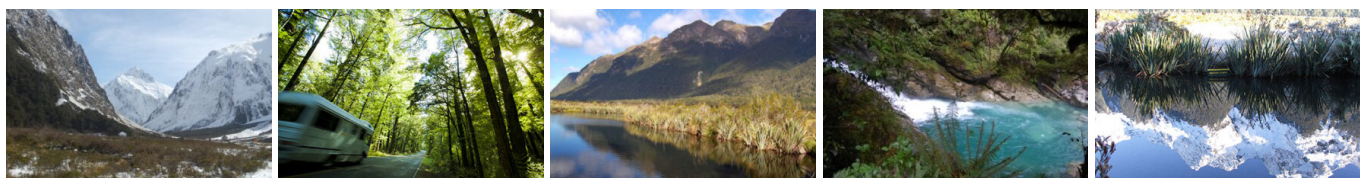
The perfect base for all your Fiordland travel, Distinction Luxmore Hotel provides comfortable accommodation right in the heart of Te Anau.

Meals included: Breakfast



---

## Day 12



## Te Anau to Milford Sound

The road to Milford Sound has countless photo opportunities and short walks. The Mirror Lakes create perfectly clear reflections of the surrounding mountains and glacier formed meadows. Further along the road The Chasm Walk includes two walking bridges over the dramatic Cleddau River, while the surrounding ancient native beech forest creates a fascinating landscape. You'll pass through the Homer Tunnel, an incredible feat of engineering at 1219 metres long. Milford Sound is the only sound accessible by road, making it very popular to visit. Coming into the village you'll be greeted with an amazing view of Mitre Peak which rises spectacularly from the waters up to the sky. Real Journey cruises can take you out into the sound where you'll receive a wealth of information on how this magnificent area has been formed and experience first-hand the multitude of waterfalls that line the fiord.

Note: Please make sure to allow 2.5hrs to Milford Sound, this takes into account the current road works on the Milford Road."

---

## Milford Mariner Overnight Cruise

The Milford Mariner offers you a very special dinner, bed and breakfast experience on Milford Sound. Onboard the Milford Mariner you will cruise the full length of this spectacular fiord to the Tasman Sea before anchoring for the night in sheltered Harrison Cove. Accompanied by a nature guide you can go exploring in the tender craft and kayaks or simply relax on deck. After the day's activities, you enjoy a delicious evening buffet in the spacious saloon before retiring to your private cabin.

The vessel itself was designed along the lines of a traditional New Zealand coastal trading scow to reflect Fiordland's heritage. Departing from the Milford Wharf, the Milford Mariner cruises the length of Milford Sound to the Tasman Sea leisurely exploring on the way many points of interest, there is plenty of time to view the waterfalls, rainforest, mountains and wildlife and the experienced nature guide on board will be able to answer any questions you may have. After reaching the open sea, subject to weather and favourable conditions the sails are hoisted for a period. The vessel returns to the calm and shelter of Harrison Cove for your overnight stay.

---

## Your accommodation: Overnight Boat in Milford Sound

Onboard the Milford Mariner you will cruise the full length of this spectacular fiord to the Tasman Sea before anchoring for the night in sheltered Harrison Cove. After the day's activities, you'll enjoy a delicious evening buffet in the spacious saloon before retiring to your private cabin.

Meals included: Breakfast, Dinner



## Day 13



## Milford Sound to Queenstown

Enjoy the wonderful drive along the Milford Road as you head back towards Te Anau. Crossing the rolling tussock lands you pass through Mossburn, the deer capital of New Zealand. Following the lake north the Remarkable mountain range towers over you as you approach the adventure capital of Queenstown.

Note: Please make sure to allow 5.5hrs to Queenstown, this takes into account the current road works on the Milford Road.

---

## Your accommodation: Millennium Hotel Queenstown

Right in the heart of the action, the Millennium Hotel is just minutes from Queenstown's central shopping and entertainment district. Outdoor activities such as bungy jumping, white water rafting and jet boating are just some of the easily accessible activities nearby in New Zealand's adventure capital.

Meals included: Breakfast



## Day 14



## Your final morning in Queenstown before driving to the airport and catching your next flight

Depending on when your flight departs you might have time for one last Queenstown adventure before dropping your car off at the airport and catching your flight.

---

---



## Tour details

Departures:	Daily
Tour type:	South Island Self Drive
Starts:	Christchurch
Finishes:	Queenstown
Tour length:	14
Accommodation:	Hotel 4 star
Car/transport type:	

---

## Included activities

Includes	All breakfasts
Includes	Private airport transfers
Includes	Private train station transfers
Includes	TranzAlpine Train from Greymouth to Christchurch
Includes	Routeburn Track Day Hike, Queenstown
Includes	Lake Wanaka Cruise and Island Nature Walk
Includes	Milford Track Guided Day Hike
Includes	Franz Josef Glacier Helihike
Includes	Black Water Rafting Paparoa National Park

---

## Accommodation summary

Day 1	Heritage Christchurch
Day 2	Scenic Hotel Punakaiki
Day 3	Scenic Hotel Punakaiki
Day 4	Scenic Hotel Franz Josef Glacier
Day 5	Scenic Hotel Franz Josef Glacier
Day 6	Edgewater
Day 7	Millennium Hotel Queenstown
Day 8	Millennium Hotel Queenstown
Day 9	Millennium Hotel Queenstown
Day 10	Distinction Luxmore Hotel
Day 11	Distinction Luxmore Hotel
Day 12	Overnight Boat in Milford Sound
Day 13	Millennium Hotel Queenstown